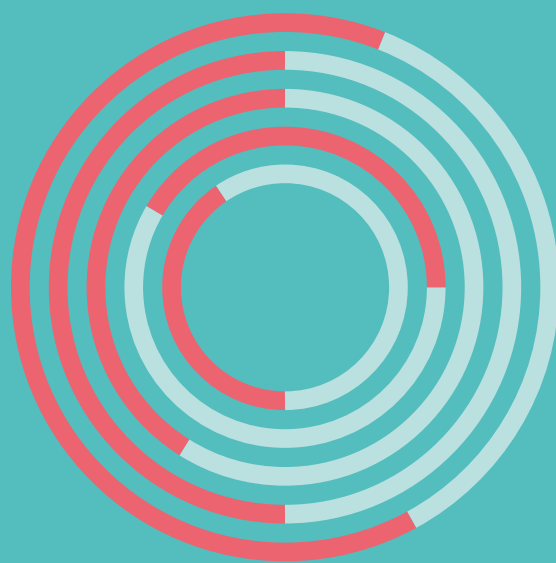


UNAIDS 2022  
REFERENCE

# UNAIDS DATA 2022



## ANGOLA

## COUNTRY DATA

## EPIDEMIC ESTIMATES

	2010	2015	2021
<b>New HIV infections</b>			
New HIV infections (all ages)	30 000 [24 000–36 000]	24 000 [18 000–30 000]	17 000 [12 000–23 000]
New HIV infections (0–14)	8000 [6600–10 000]	7400 [5500–9400]	3800 [2000–5800]
New HIV infections (15–24)	8600 [5200–11 000]	6400 [4000–9000]	5300 [3300–7600]
New HIV infections (women, 15+)	14 000 [11 000–16 000]	11 000 [8100–14 000]	9300 [6500–13 000]
New HIV infections (men, 15+)	8100 [6400–10 000]	5400 [4000–8000]	4000 [2700–6100]
HIV incidence (all ages) per 1000 population	1.33 [1.09–1.63]	0.89 [0.68–1.13]	0.52 [0.35–0.71]
<b>AIDS-related deaths</b>			
AIDS-related deaths (all ages)	15 000 [12 000–19 000]	15 000 [12 000–19 000]	15 000 [11 000–19 000]
AIDS-related deaths (0–14)	5300 [4400–6600]	5400 [4200–6800]	3600 [2300–4900]
AIDS-related deaths (women, 15+)	5900 [4600–7600]	5200 [3700–6900]	6300 [4200–8400]
AIDS-related deaths (men, 15+)	3700 [2800–5100]	4200 [3200–5600]	4800 [3600–6400]
<b>People living with HIV</b>			
People living with HIV (all ages)	250 000 [210 000–300 000]	300 000 [250 000–350 000]	320 000 [270 000–380 000]
People living with HIV (0–14)	33 000 [27 000–41 000]	39 000 [33 000–49 000]	36 000 [28 000–46 000]
People living with HIV (women, 15+)	140 000 [120 000–160 000]	170 000 [140 000–200 000]	190 000 [160 000–220 000]
People living with HIV (men, 15+)	78 000 [66 000–99 000]	90 000 [75 000–110 000]	91 000 [77 000–110 000]
HIV prevalence (15–49)	1.9 [1.6–2.3]	1.9 [1.6–2.2]	1.6 [1.3–1.9]

## LAWS AND POLICIES

Laws criminalizing the transmission of, non-disclosure of or exposure to HIV transmission	Yes
Criminalization of sex work among consenting adults	Sex work is not subject to punitive regulations and is not criminalized anywhere in the country
Criminalization of same-sex sexual acts in private	No, laws penalizing consensual same-sex sexual acts have been decriminalized or have never existed anywhere in the country
Criminalization of possession of small amounts of drugs	Yes
Criminalization of transgender people	Yes
Laws or policies restricting the entry, stay and residence of people living with HIV	No restrictions
Parental consent for adolescents to access HIV testing	Yes
Spousal consent for married women to access sexual and reproductive health services	No
Mandatory HIV testing for marriage, work or residence permits or for certain groups	No

## STIGMA AND DISCRIMINATION

Percentage of women and men aged 15–49 years who report discriminatory attitudes towards people living with HIV	...
Percentage of people living with HIV who report experienced stigma and discrimination in the general community in the last 12 months	...
Percentage of people living with HIV who report experiences of HIV-related discrimination in health-care settings	...

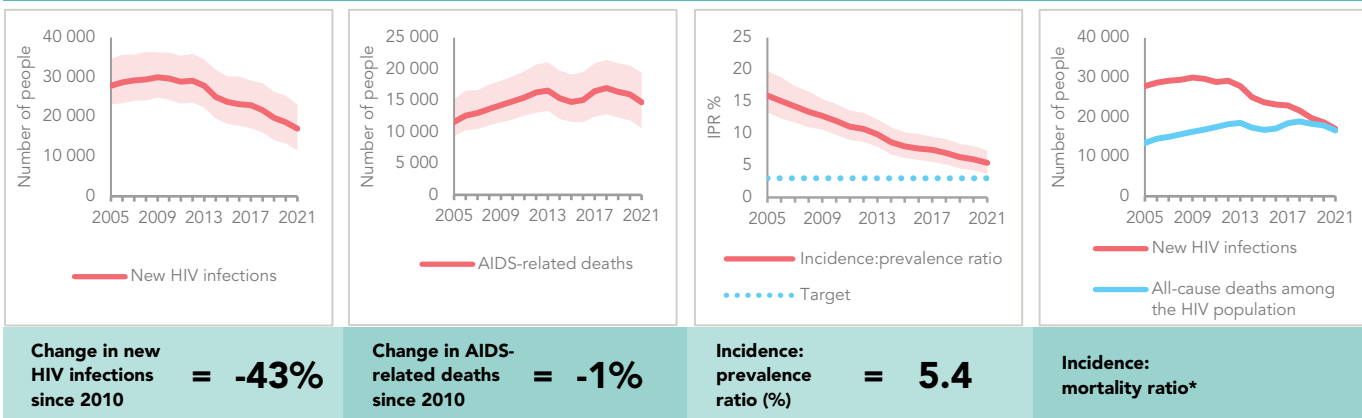
## GENDER INEQUALITY AND VIOLENCE

Proportion of ever-married or partnered women aged 15–49 years who experienced physical or sexual violence from a male intimate partner in the past 12 months	...
Percentage of women and men aged 15 to 49 years who agree that a husband is justified in hitting or beating his wife for specific reasons	...

## EXPENDITURES

	Financing sources					Total
	Domestic private	Domestic public	International: PEPFAR	International: Global Fund	International: all others	
Last available report: 2021	US\$ 0	US\$ 24 024 633	US\$ 145 107	US\$ 3 631 965	US\$ 319 764	US\$ 28 121 469

### EPIDEMIC TRANSITION METRICS



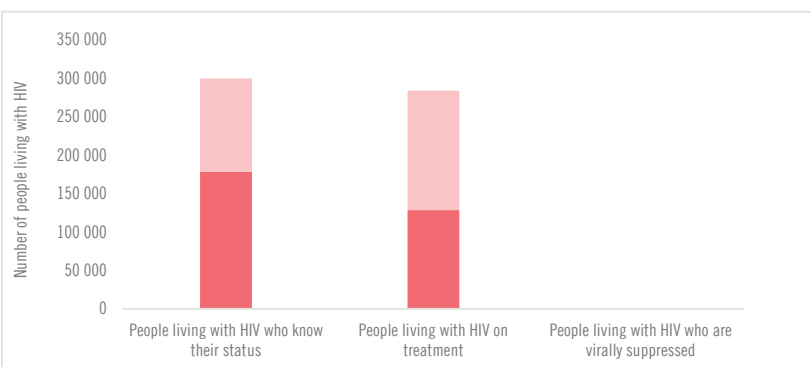
\* The incidence:mortality ratio is not published if the country has not achieved antiretroviral therapy coverage of 91% or higher (the testing and treatment target for 2025).

### KEY POPULATIONS

	Sex workers	Men who have sex with men	People who inject drugs	Transgender people	Prisoners
Estimated size of population	...	...	...	...	...
HIV prevalence	8%	2%	...	...	15.9%
HIV testing and status awareness	100%**	99.8%**	...	...	...
Antiretroviral therapy coverage	42%	...	...	...	100%
Condom use	71.7%	59.1%	...	...	...
Coverage of HIV prevention programmes	...	...	...	...	...
Avoidance of health care because of stigma and discrimination	...	...	...	...	...
Expenditures in US\$ (2021)	1 148 105	4128	...	...	...

\*\* Programme data—not representative; includes people with negative results.

### HIV TESTING AND TREATMENT CASCADE



	57% [48–67%] 178 370	41% [34–49%] 128 292	...% [...–...%] ...
<b>Children (0–14)</b>	19% [15–24%] 6935	19% [15–24%] 6935	...% [...–...%] ...
<b>Women (15+)</b>	64% [55–76%] 121 392	47% [40–55%] 88 401	...% [...–...%] ...
<b>Men (15+)</b>	55% [47–66%] 50 042	36% [31–44%] 32 956	...% [...–...%] ...

### ELIMINATION OF VERTICAL TRANSMISSION

	2015	2021
Percentage of pregnant women living with HIV accessing antiretroviral medicines	31% [24–37%]	75% [58–94%]
Final vertical transmission rate including during breastfeeding	27.0% [25.1–28.9%]	15.2% [10.3–18.7%]
Early infant diagnosis	4.5% [3.7–5.7%]	3.1% [2.5–4.1%]

### HIV COMORBIDITIES

Estimated number of incident tuberculosis cases among people living with HIV (2020)	13 000 [8700 –19 000]
People living with HIV who started TB preventive therapy (2020)	5721
Cervical cancer screening of women living with HIV	...
People coinfectd with HIV and hepatitis C virus starting hepatitis C treatment	...

### HIV PREVENTION

Adults aged 15+ years with unsuppressed viral load	...
Knowledge of HIV prevention among young people aged 15–24 years	...
— Women	...
— Men	...
Condom use at last sex with a non-marital, non-cohabiting partner among people aged 15–49 years	...
— Women	...
— Men	...
Women aged 15–49 years who have their demand for family planning satisfied by modern methods	...
Men aged 15–49 years who are circumcised	Not applicable
Voluntary medical male circumcisions performed according to national standards	Not applicable
People who received PrEP at least once during the reporting period	...
Harm reduction	...
— Use of sterile injecting equipment at last injection	...
— Needles and syringes distributed per person who injects	...
— Coverage of agonist opioid methadone therapy	...
— Naloxone available (2022)	...

## BOTSWANA

## COUNTRY DATA

## EPIDEMIC ESTIMATES

	2010	2015	2021
<b>New HIV infections</b>			
New HIV infections (all ages)	13 000 [12 000–15 000]	11 000 [9300–12 000]	7200 [6300–8200]
New HIV infections (0–14)	1300 [960–1600]	700 [<500–940]	<500 [<200– <500]
New HIV infections (15–24)	4600 [3100–5400]	3400 [2100–3900]	2000 [1200–2500]
New HIV infections (women, 15+)	7100 [5900–8300]	6700 [5700–7500]	5000 [4200–5900]
New HIV infections (men, 15+)	4700 [4100–5800]	3300 [2800–3800]	1900 [1700–2400]
HIV incidence (all ages) per 1000 population	7.85 [6.79–9.30]	5.81 [5.00–6.49]	3.48 [3.04–4.03]
<b>AIDS-related deaths</b>			
AIDS-related deaths (all ages)	6500 [5800–7800]	5000 [4200–5800]	4600 [3800–5400]
AIDS-related deaths (0–14)	1000 [810–1200]	<500 [<500–570]	<200 [<200– <500]
AIDS-related deaths (women, 15+)	3100 [2600–3500]	2300 [1900–2700]	2200 [1800–2600]
AIDS-related deaths (men, 15+)	2500 [2100–3200]	2300 [1900–2800]	2300 [1900–2700]
<b>People living with HIV</b>			
People living with HIV (all ages)	320 000 [310 000–350 000]	350 000 [330 000–370 000]	360 000 [340 000–390 000]
People living with HIV (0–14)	18 000 [16 000–20 000]	12 000 [9800–14 000]	6600 [4600–7900]
People living with HIV (women, 15+)	180 000 [170 000–190 000]	200 000 [190 000–210 000]	220 000 [210 000–230 000]
People living with HIV (men, 15+)	130 000 [120 000–140 000]	140 000 [130 000–150 000]	140 000 [130 000–150 000]
HIV prevalence (15–49)	23.2 [22.7–23.6]	21.7 [20.6–22.1]	18.6 [16.9–19.1]

## LAWS AND POLICIES

Laws criminalizing the transmission of, non-disclosure of or exposure to HIV transmission	Yes
Criminalization of sex work among consenting adults	Any criminalization or punitive regulation of sex work
Criminalization of same-sex sexual acts in private	...
Criminalization of possession of small amounts of drugs	Yes
Criminalization of transgender people	...
Laws or policies restricting the entry, stay and residence of people living with HIV	No restrictions
Parental consent for adolescents to access HIV testing	Yes
Spousal consent for married women to access sexual and reproductive health services	Yes
Mandatory HIV testing for marriage, work or residence permits or for certain groups	No

## STIGMA AND DISCRIMINATION

Percentage of women and men aged 15–49 years who report discriminatory attitudes towards people living with HIV	...
Percentage of people living with HIV who report experienced stigma and discrimination in the general community in the last 12 months	...

Percentage of people living with HIV who report experiences of HIV-related discrimination in health-care settings	...
-------------------------------------------------------------------------------------------------------------------	-----

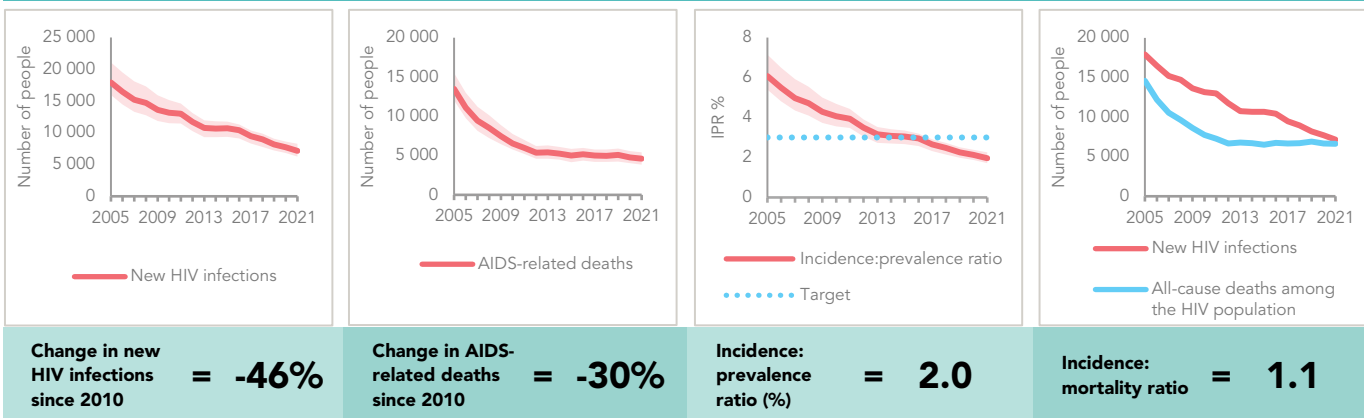
## GENDER INEQUALITY AND VIOLENCE

Proportion of ever-married or partnered women aged 15–49 years who experienced physical or sexual violence from a male intimate partner in the past 12 months	...
Percentage of women and men aged 15 to 49 years who agree that a husband is justified in hitting or beating his wife for specific reasons	...

## EXPENDITURES

	Financing sources					Total
	Domestic private	Domestic public	International: PEPFAR	International: Global Fund	International: all others	
Last available report: 2019	US\$ 3 115 841	US\$ 98 594 231	US\$ 52 969 140	US\$ 4 324 229	US\$ 3 683 669	US\$ 162 687 111

### EPIDEMIC TRANSITION METRICS



### KEY POPULATIONS

	Sex workers	Men who have sex with men	People who inject drugs	Transgender people	Prisoners
Estimated size of population	...	...	...	...	...
HIV prevalence	42.2%	14.8%	...	...	...
HIV testing and status awareness	...	...	...	...	...
Antiretroviral therapy coverage	87.6%	73.5%	...	...	...
Condom use	75.7%	77.5%	...	...	...
Coverage of HIV prevention programmes	...	...	...	...	...
Avoidance of health care because of stigma and discrimination	...	...	...	...	...
Expenditures in US\$ (2019)	751 786	536 541	...	53 276	...

### HIV COMORBIDITIES

Estimated number of incident tuberculosis cases among people living with HIV (2020)	2700 [2100-3400]
People living with HIV who started TB preventive therapy (2020)	...
Women who tested positive for HIV among those screened for cervical cancer (programme data) (2018)	29.9%
People coinfectd with HIV and hepatitis C virus starting hepatitis C treatment	...

### HIV PREVENTION

Adults aged 15+ years with unsuppressed viral load	1.9%
Knowledge of HIV prevention among young people aged 15-24 years	...
— Women	...
— Men	...

Condom use at last sex with a non-marital, non-cohabiting partner among people aged 15-49 years	...
— Women	...
— Men	...

Women aged 15-49 years who have their demand for family planning satisfied by modern methods	...
----------------------------------------------------------------------------------------------	-----

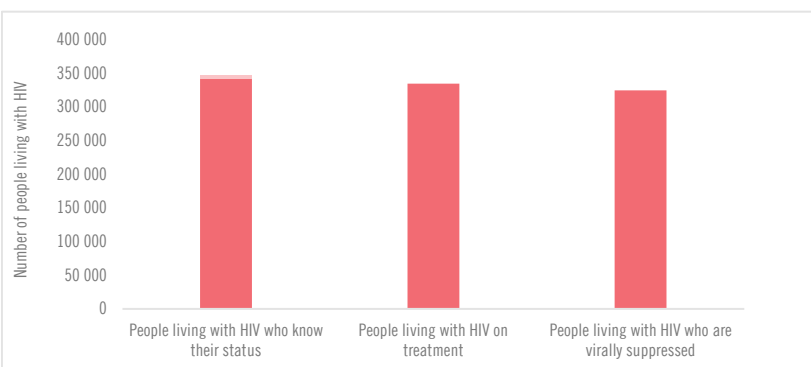
Men aged 15-49 years who are circumcised	...
------------------------------------------	-----

Voluntary medical male circumcisions performed according to national standards (2021)	4192
---------------------------------------------------------------------------------------	------

People who received PrEP at least once during the reporting period (2021)	5149
---------------------------------------------------------------------------	------

Harm reduction	...
— Use of sterile injecting equipment at last injection	...
— Needles and syringes distributed per person who injects	...
— Coverage of agonist opioid methadone therapy	...
— Naloxone available (2022)	...

### HIV TESTING AND TREATMENT CASCADE



	94% [89-100%] 341 850	92% [87-98%] 334 351	90% [85-96%] 324 756
All ages			
Children (0-14)	70% [49-84%] 4631	69% [48-82%] 4550	63% [44-75%] 4154
Women (15+)	95% [91-100%] 209 201	95% [91-100%] 209 201	94% [89-100%] 205 910
Men (15+)	93% [87-100%] 128 018	87% [82-94%] 120 600	86% [81-92%] 118 847

### ELIMINATION OF VERTICAL TRANSMISSION

	2015	2021
Percentage of pregnant women living with HIV accessing antiretroviral medicines	85% [72-93%]	98% [80-100%]
Final vertical transmission rate including during breastfeeding	5.4% [3.4-6.7%]	2.2% [1.1-3.2%]
Early infant diagnosis	44.8% [41.0-52.6%]	82.7% [76.0- >95%]

## COMOROS

## COUNTRY DATA

## EPIDEMIC ESTIMATES

	2010	2015	2021
<b>New HIV infections</b>			
New HIV infections (all ages)	<100 [<100– <100]	<100 [<100– <100]	<100 [<100– <100]
New HIV infections (0–14)	... [...–...]	... [...–...]	... [...–...]
New HIV infections (15–24)	<100 [<100– <100]	<100 [<100– <100]	<100 [<100– <100]
New HIV infections (women, 15+)	<100 [<100– <100]	<100 [<100– <100]	<100 [<100– <100]
New HIV infections (men, 15+)	<100 [<100– <100]	<100 [<100– <100]	<100 [<100– <100]
HIV incidence (all ages) per 1000 population	0.02 [<0.01–0.04]	0.01 [<0.01–0.03]	<0.01 [<0.01–0.02]
<b>AIDS-related deaths</b>			
AIDS-related deaths (all ages)	<100 [<100– <100]	<100 [<100– <100]	<100 [<100– <100]
AIDS-related deaths (0–14)	... [...–...]	... [...–...]	... [...–...]
AIDS-related deaths (women, 15+)	<100 [<100– <100]	<100 [<100– <100]	<100 [<100– <100]
AIDS-related deaths (men, 15+)	<100 [<100– <100]	<100 [<100– <100]	<100 [<100– <100]
<b>People living with HIV</b>			
People living with HIV (all ages)	<200 [<100– <500]	<200 [<100– <500]	<200 [<100– <500]
People living with HIV (0–14)	... [...–...]	... [...–...]	... [...–...]
People living with HIV (women, 15+)	<100 [<100– <200]	<100 [<100– <200]	<100 [<100– <200]
People living with HIV (men, 15+)	<100 [<100– <200]	<100 [<100– <200]	<100 [<100– <200]
HIV prevalence (15–49)	<0.1 [<0.1– <0.1]	<0.1 [<0.1– <0.1]	<0.1 [<0.1– <0.1]

## LAWS AND POLICIES

Laws criminalizing the transmission of, non-disclosure of or exposure to HIV transmission	No
Criminalization of sex work among consenting adults	Any criminalization or punitive regulation of sex work
Criminalization of same-sex sexual acts in private	Yes, imprisonment (up to 14 years)
Criminalization of possession of small amounts of drugs	Yes
Criminalization of transgender people	No
Laws or policies restricting the entry, stay and residence of people living with HIV	No restrictions
Parental consent for adolescents to access HIV testing	No
Spousal consent for married women to access sexual and reproductive health services	No
Mandatory HIV testing for marriage, work or residence permits or for certain groups	No

## STIGMA AND DISCRIMINATION

Percentage of women and men aged 15–49 years who report discriminatory attitudes towards people living with HIV	...
Percentage of people living with HIV who report experienced stigma and discrimination in the general community in the last 12 months	...

Percentage of people living with HIV who report experiences of HIV-related discrimination in health-care settings	...
-------------------------------------------------------------------------------------------------------------------	-----

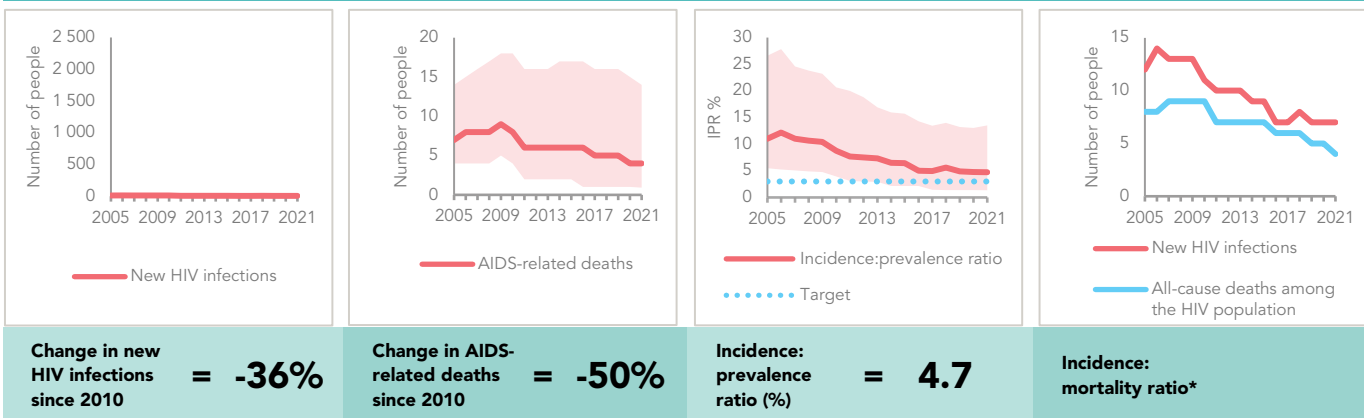
## GENDER INEQUALITY AND VIOLENCE

Proportion of ever-married or partnered women aged 15–49 years who experienced physical or sexual violence from a male intimate partner in the past 12 months	...
Percentage of women and men aged 15 to 49 years who agree that a husband is justified in hitting or beating his wife for specific reasons	...

## EXPENDITURES

	Financing sources					Total
	Domestic private	Domestic public	International: PEPFAR	International: Global Fund	International: all others	
Last available report: 2021	US\$ 0	US\$ 122 141	US\$ 0	US\$ 1 128 270	US\$ 51 695	US\$ 1 302 106

### EPIDEMIC TRANSITION METRICS



\* The incidence:mortality ratio is not published if the country has not achieved antiretroviral therapy coverage of 91% or higher (the testing and treatment target for 2025).

### KEY POPULATIONS

	Sex workers	Men who have sex with men	People who inject drugs	Transgender people	Prisoners
Estimated size of population	...	...	...	...	...
HIV prevalence	0.8%	0.4%	1.8%	...	...
HIV testing and status awareness	100%	100%	100%	...	...
Antiretroviral therapy coverage	...	...	...	...	...
Condom use	35.8%	56.2%	43.8%	...	...
Coverage of HIV prevention programmes	...	...	...	...	...
Avoidance of health care because of stigma and discrimination	...	...	...	...	...
Expenditures in US\$ (2016)	7888	12 479	...	...	...

### HIV COMORBIDITIES

Estimated number of incident tuberculosis cases among people living with HIV (2020)	1 [0-2]
People living with HIV who started TB preventive therapy (2020)	...
Cervical cancer screening of women living with HIV	...
People coinfectd with HIV and hepatitis C virus starting hepatitis C treatment	...

### HIV PREVENTION

Adults aged 15+ years with unsuppressed viral load	<0.1%
Knowledge of HIV prevention among young people aged 15-24 years	...
— Women	...
— Men	...

Condom use at last sex with a non-marital, non-cohabiting partner among people aged 15-49 years	...
— Women	...
— Men	...

Women aged 15-49 years who have their demand for family planning satisfied by modern methods	...
----------------------------------------------------------------------------------------------	-----

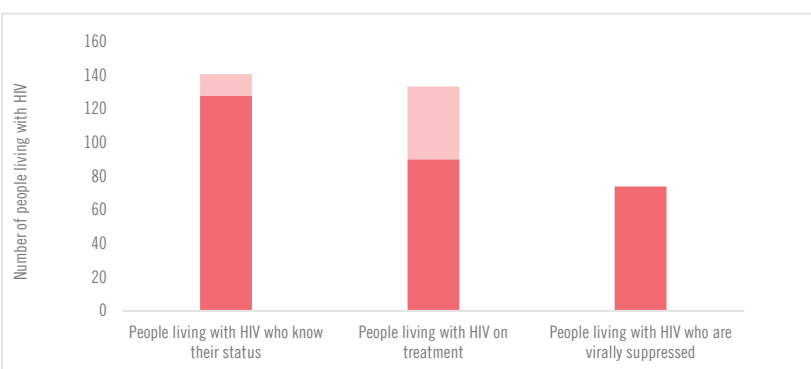
Men aged 15-49 years who are circumcised	Not applicable
------------------------------------------	----------------

Voluntary medical male circumcisions performed according to national standards	Not applicable
--------------------------------------------------------------------------------	----------------

People who received PrEP at least once during the reporting period	...
--------------------------------------------------------------------	-----

Harm reduction	
— Use of sterile injecting equipment at last injection	...
— Needles and syringes distributed per person who injects	...
— Coverage of agonist opioid methadone therapy	...
— Naloxone available (2022)	No

### HIV TESTING AND TREATMENT CASCADE



	People living with HIV who know their status	People living with HIV on treatment	People living with HIV who are virally suppressed
All ages	86% [44-100%] 128	61% [31-100%] 90	...% [...-...%] 74
Children (0-14)	...% [...-...%] 4	...% [...-...%] 4	...% [...-...%] ...
Women (15+)	85% [46-100%] 66	58% [31-100%] 45	54% [29-100%] 42
Men (15+)	95% [48-100%] 58	67% [34-100%] 41	52% [27-100%] 32

### ELIMINATION OF VERTICAL TRANSMISSION

	2015	2021
Percentage of pregnant women living with HIV accessing antiretroviral medicines	...% [...-...%]	...% [...-...%]
Final vertical transmission rate including during breastfeeding	...% [...-...%]	...% [...-...%]
Early infant diagnosis	...% [...-...%]	...% [...-...%]

## ERITREA

## COUNTRY DATA

## EPIDEMIC ESTIMATES

	2010	2015	2021
<b>New HIV infections</b>			
New HIV infections (all ages)	770 [<500–1400]	<500 [<200–720]	<500 [<100–660]
New HIV infections (0–14)	<200 [<100– <200]	<100 [<100– <100]	<100 [<100– <100]
New HIV infections (15–24)	<500 [<200– <500]	<100 [<100– <500]	<100 [<100– <200]
New HIV infections (women, 15+)	<500 [<500–680]	<200 [<100– <500]	<200 [<100– <500]
New HIV infections (men, 15+)	<500 [<200– <500]	<200 [<100– <500]	<100 [<100– <200]
HIV incidence (all ages) per 1000 population	0.25 [0.16–0.44]	0.10 [0.05–0.22]	0.06 [0.03–0.19]
<b>AIDS-related deaths</b>			
AIDS-related deaths (all ages)	730 [<500–1100]	<500 [<200–620]	<500 [<200–570]
AIDS-related deaths (0–14)	<100 [<100– <200]	<100 [<100– <100]	<100 [<100– <100]
AIDS-related deaths (women, 15+)	<500 [<200–590]	<200 [<100– <500]	<200 [<100– <500]
AIDS-related deaths (men, 15+)	<500 [<200– <500]	<200 [<100– <500]	<200 [<100– <500]
<b>People living with HIV</b>			
People living with HIV (all ages)	16 000 [12 000–21 000]	14 000 [11 000–19 000]	12 000 [9800–17 000]
People living with HIV (0–14)	1300 [930–1800]	860 [630–1200]	<500 [<500–820]
People living with HIV (women, 15+)	8700 [6700–11 000]	7700 [6000–10 000]	7100 [5600–9800]
People living with HIV (men, 15+)	6400 [4800–8400]	5500 [4300–7300]	4800 [3900–6400]
HIV prevalence (15–49)	0.9 [0.6–1.1]	0.7 [0.5–1.0]	0.5 [0.3–0.7]

## LAWS AND POLICIES

Laws criminalizing the transmission of, non-disclosure of or exposure to HIV transmission	Yes
Criminalization of sex work among consenting adults	Any criminalization or punitive regulation of sex work
Criminalization of same-sex sexual acts in private	Yes, imprisonment (up to 14 years)
Criminalization of possession of small amounts of drugs	Yes
Criminalization of transgender people	...
Laws or policies restricting the entry, stay and residence of people living with HIV	No restrictions
Parental consent for adolescents to access HIV testing	Data not available
Spousal consent for married women to access sexual and reproductive health services	Data not available
Mandatory HIV testing for marriage, work or residence permits or for certain groups	Yes

## STIGMA AND DISCRIMINATION

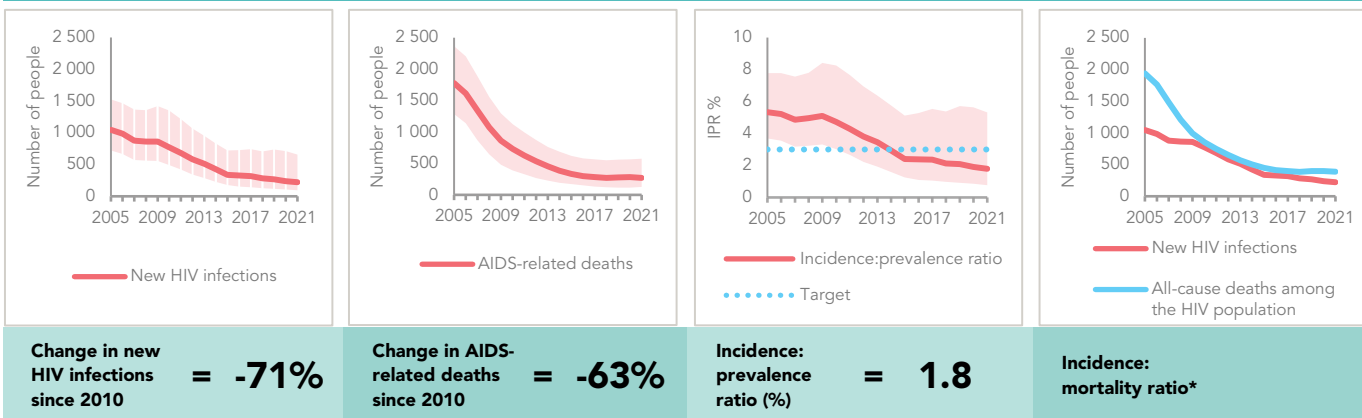
Percentage of women and men aged 15–49 years who report discriminatory attitudes towards people living with HIV	...
Percentage of people living with HIV who report experienced stigma and discrimination in the general community in the last 12 months	...
Percentage of people living with HIV who report experiences of HIV-related discrimination in health-care settings	...
<b>GENDER INEQUALITY AND VIOLENCE</b>	
Proportion of ever-married or partnered women aged 15–49 years who experienced physical or sexual violence from a male intimate partner in the past 12 months	...
Percentage of women and men aged 15 to 49 years who agree that a husband is justified in hitting or beating his wife for specific reasons	...

## EXPENDITURES

	Financing sources					Total
	Domestic private	Domestic public	International: PEPFAR	International: Global Fund	International: all others	
Last available report: 2021	US\$ 0	US\$ 0	US\$ 0	US\$ 3 670 115	US\$ 0	US\$ 3 670 115



### EPIDEMIC TRANSITION METRICS



\* The incidence:mortality ratio is not published if the country has not achieved antiretroviral therapy coverage of 91% or higher (the testing and treatment target for 2025).

### KEY POPULATIONS

	Sex workers	Men who have sex with men	People who inject drugs	Transgender people	Prisoners
Estimated size of population	...	...	...	...	...
HIV prevalence	14.8%	...	...	...	1.4%
HIV testing and status awareness	...	...	...	...	...
Antiretroviral therapy coverage	...	...	...	...	...
Condom use	99.5%	...	...	...	...
Coverage of HIV prevention programmes	...	...	...	...	...
Avoidance of health care because of stigma and discrimination	6%	...	...	...	...
Expenditures in US\$	...	...	...	...	...

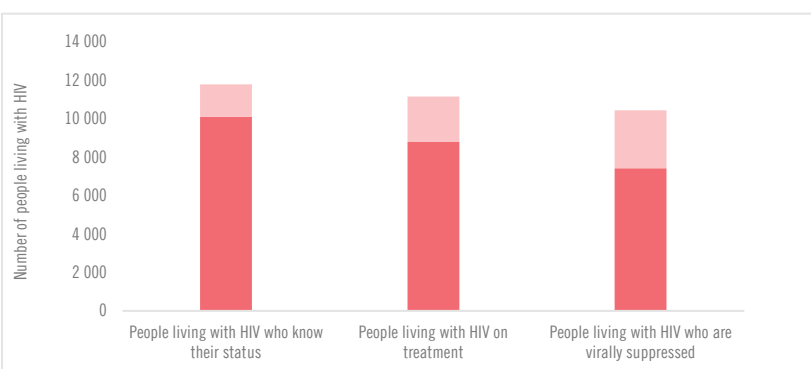
### HIV COMORBIDITIES

Estimated number of incident tuberculosis cases among people living with HIV (2020)	110 [46–200]
People living with HIV who started TB preventive therapy (2020)	...
Cervical cancer screening of women living with HIV	...
People coinfectd with HIV and hepatitis C virus starting hepatitis C treatment	...

### HIV PREVENTION

Adults aged 15+ years with unsuppressed viral load	0.2%
Knowledge of HIV prevention among young people aged 15–24 years	...
— Women	...
— Men	...
Condom use at last sex with a non-marital, non-cohabiting partner among people aged 15–49 years	...
— Women	...
— Men	...
Women aged 15–49 years who have their demand for family planning satisfied by modern methods	...

### HIV TESTING AND TREATMENT CASCADE



	82% [65–100%] 10 101	71% [56–97%] 8775	62% [49–84%] 7414
<b>All ages</b>			
<b>Children (0–14)</b>	56% [38–96%] 270	56% [38–96%] 270	47% [32–80%] 226
<b>Women (15+)</b>	82% [65–100%] 5829	74% [59–100%] 5285	65% [51–89%] 4606
<b>Men (15+)</b>	84% [67–100%] 4002	67% [54–89%] 3220	59% [47–78%] 2808

### ELIMINATION OF VERTICAL TRANSMISSION

	2015	2021
Percentage of pregnant women living with HIV accessing antiretroviral medicines	100% [76–100%]	81% [54–100%]
Final vertical transmission rate including during breastfeeding	14.7% [11.2–23.6%]	15.5% [6.8–26.1%]
Early infant diagnosis	81.8% [55.8– >95%]	45.7% [29.1–68.0%]

Men aged 15–49 years who are circumcised	Not applicable
Voluntary medical male circumcisions performed according to national standards	Not applicable
People who received PrEP at least once during the reporting period (2021)	29
<b>Harm reduction</b>	
— Use of sterile injecting equipment at last injection	...
— Needles and syringes distributed per person who injects	...
— Coverage of agonist opioid methadone therapy	...
— Naloxone available (2022)	...

## ESWATINI

## COUNTRY DATA

## EPIDEMIC ESTIMATES

	2010	2015	2021
<b>New HIV infections</b>			
New HIV infections (all ages)	14 000 [13 000–16 000]	12 000 [11 000–14 000]	6900 [5600–8100]
New HIV infections (0–14)	1300 [1000–1500]	630 [<500–800]	<500 [<200– <500]
New HIV infections (15–24)	4800 [3500–5600]	4300 [3000–5000]	2200 [1400–2900]
New HIV infections (women, 15+)	8600 [7600–9600]	7700 [6900–8400]	4400 [3700–5200]
New HIV infections (men, 15+)	4500 [3800–5200]	3900 [3500–4600]	2200 [1700–2600]
HIV incidence (all ages) per 1000 population	16.96 [15.37–19.01]	14.30 [12.94–15.98]	7.65 [6.18–9.10]
<b>AIDS-related deaths</b>			
AIDS-related deaths (all ages)	6000 [5300–7200]	3500 [3100–4000]	2600 [2100–3000]
AIDS-related deaths (0–14)	1300 [1100–1500]	<500 [<500–570]	<200 [<200– <500]
AIDS-related deaths (women, 15+)	2600 [2100–3200]	1800 [1600–2100]	1400 [1100–1700]
AIDS-related deaths (men, 15+)	2100 [1800–3000]	1300 [1100–1500]	1000 [860–1300]
<b>People living with HIV</b>			
People living with HIV (all ages)	180 000 [170 000–190 000]	200 000 [190 000–220 000]	220 000 [210 000–230 000]
People living with HIV (0–14)	14 000 [13 000–15 000]	12 000 [10 000–12 000]	7200 [5900–8100]
People living with HIV (women, 15+)	110 000 [100 000–110 000]	120 000 [120 000–130 000]	130 000 [130 000–140 000]
People living with HIV (men, 15+)	60 000 [55 000–66 000]	69 000 [64 000–76 000]	78 000 [72 000–85 000]
HIV prevalence (15–49)	27.9 [27.2–28.4]	29.6 [29.1–30.1]	27.9 [27.0–28.9]

## LAWS AND POLICIES

Laws criminalizing the transmission of, non-disclosure of or exposure to HIV transmission	No
Criminalization of sex work among consenting adults	Any criminalization or punitive regulation of sex work
Criminalization of same-sex sexual acts in private	Yes, imprisonment (up to 14 years)
Criminalization of possession of small amounts of drugs	Yes
Criminalization of transgender people	No
Laws or policies restricting the entry, stay and residence of people living with HIV	No restrictions
Parental consent for adolescents to access HIV testing	Yes
Spousal consent for married women to access sexual and reproductive health services	Yes
Mandatory HIV testing for marriage, work or residence permits or for certain groups	No

## STIGMA AND DISCRIMINATION

Percentage of women and men aged 15–49 years who report discriminatory attitudes towards people living with HIV	...
Percentage of people living with HIV who report experienced stigma and discrimination in the general community in the last 12 months	...

Percentage of people living with HIV who report experiences of HIV-related discrimination in health-care settings	...
-------------------------------------------------------------------------------------------------------------------	-----

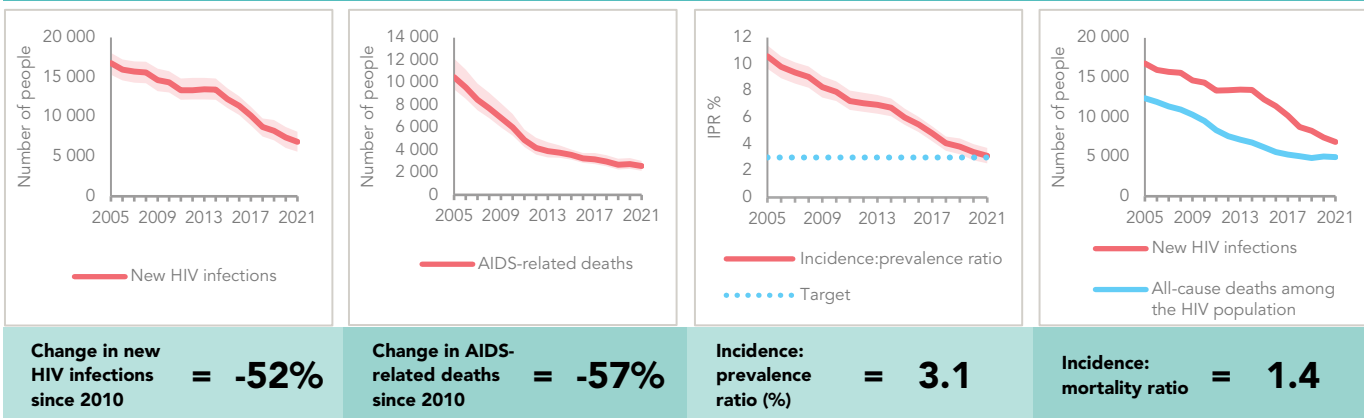
## GENDER INEQUALITY AND VIOLENCE

Proportion of ever-married or partnered women aged 15–49 years who experienced physical or sexual violence from a male intimate partner in the past 12 months	...
Percentage of women and men aged 15 to 49 years who agree that a husband is justified in hitting or beating his wife for specific reasons	...

## EXPENDITURES

	Financing sources					Total
	Domestic private	Domestic public	International: PEPFAR	International: Global Fund	International: all others	
Last available report: 2019	US\$ 798 545	US\$ 40 945 032	US\$ 42 866 397	US\$ 9 911 517	US\$ 1 869 459	US\$ 102 113 481

### EPIDEMIC TRANSITION METRICS



### KEY POPULATIONS

	Sex workers	Men who have sex with men	People who inject drugs	Transgender people	Prisoners
Estimated size of population	...	4000	...	...	46 800
HIV prevalence	60.8%	27.2%	...	...	...
HIV testing and status awareness	100%	100%	...	...	...
Antiretroviral therapy coverage	...	...	...	...	...
Condom use	50%	79.6%	...	...	...
Coverage of HIV prevention programmes	...	...	...	...	...
Avoidance of health care because of stigma and discrimination	34%	...	...	...	...
Expenditures in US\$ (2019)	268 442	...	...	...	...

### HIV COMORBIDITIES

Estimated number of incident tuberculosis cases among people living with HIV (2020)	2500 [1600 -3600]
People living with HIV who started TB preventive therapy (2020)	29 999
Cervical cancer screening of women living with HIV	...
People coinfectd with HIV and hepatitis C virus starting hepatitis C treatment	...

### HIV PREVENTION

Adults aged 15+ years with unsuppressed viral load	3.4%
Knowledge of HIV prevention among young people aged 15-24 years	...
— Women	...
— Men	...

Condom use at last sex with a non-marital, non-cohabiting partner among people aged 15-49 years	...
— Women	...
— Men	...

Women aged 15-49 years who have their demand for family planning satisfied by modern methods	...
----------------------------------------------------------------------------------------------	-----

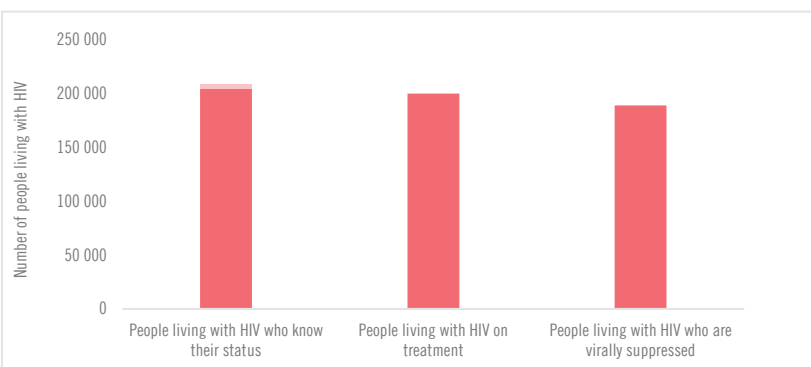
Men aged 15-49 years who are circumcised (2019)	29.3%
-------------------------------------------------	-------

Voluntary medical male circumcisions performed according to national standards (2021)	7131
---------------------------------------------------------------------------------------	------

People who received PrEP at least once during the reporting period (2020)	9125
---------------------------------------------------------------------------	------

<b>Harm reduction</b>	
— Use of sterile injecting equipment at last injection	...
— Needles and syringes distributed per person who injects	...
— Coverage of agonist opioid methadone therapy	...
— Naloxone available (2022)	No

### HIV TESTING AND TREATMENT CASCADE



	93% [87-99%] 204 327	91% [85-97%] 199 947	89% [83-95%] 188 902
<b>All ages</b>			
<b>Children (0-14)</b>	>98% [83-100%] 7219	>98% [83-100%] 7219	94% [78-100%] 6757
<b>Women (15+)</b>	94% [88-100%] 126 607	94% [88-100%] 126 607	92% [86-98%] 124 071
<b>Men (15+)</b>	91% [84-99%] 70 501	85% [79-93%] 66 121	83% [77-91%] 64 831

### ELIMINATION OF VERTICAL TRANSMISSION

	2015	2021
Percentage of pregnant women living with HIV accessing antiretroviral medicines	95% [85-100%]	99% [87-100%]
Final vertical transmission rate including during breastfeeding	5.9% [4.7-6.9%]	3.1% [2.2-4.4%]
Early infant diagnosis	...% [...-...%]	44.8% [40.6-51.4%]

## ETHIOPIA

## COUNTRY DATA

## EPIDEMIC ESTIMATES

	2010	2015	2021
<b>New HIV infections</b>			
New HIV infections (all ages)	26 000 [23 000–28 000]	16 000 [14 000–18 000]	12 000 [11 000–13 000]
New HIV infections (0–14)	8900 [5900–11 000]	4500 [3000–5400]	3200 [2100–3900]
New HIV infections (15–24)	6800 [4000–8400]	4700 [2800–5800]	3500 [2100–4400]
New HIV infections (women, 15+)	10 000 [9100–11 000]	7600 [6600–8400]	6100 [5300–6700]
New HIV infections (men, 15+)	6600 [5500–8400]	4000 [3300–5100]	2700 [2200–3400]
HIV incidence (all ages) per 1000 population	0.36 [0.32–0.39]	0.19 [0.17–0.21]	0.12 [0.11–0.13]
<b>AIDS-related deaths</b>			
AIDS-related deaths (all ages)	27 000 [22 000–33 000]	16 000 [13 000–20 000]	12 000 [9600–15 000]
AIDS-related deaths (0–14)	8400 [5700–10 000]	3600 [2500–4500]	1900 [1300–2300]
AIDS-related deaths (women, 15+)	11 000 [8500–14 000]	7700 [6000–10 000]	5700 [4400–7500]
AIDS-related deaths (men, 15+)	7300 [5900–9400]	4900 [4000–6300]	4000 [3200–5100]
<b>People living with HIV</b>			
People living with HIV (all ages)	640 000 [610 000–670 000]	630 000 [600 000–670 000]	610 000 [580 000–640 000]
People living with HIV (0–14)	99 000 [75 000–110 000]	65 000 [50 000–75 000]	42 000 [32 000–48 000]
People living with HIV (women, 15+)	340 000 [320 000–360 000]	350 000 [340 000–380 000]	360 000 [340 000–380 000]
People living with HIV (men, 15+)	200 000 [190 000–220 000]	210 000 [200 000–230 000]	210 000 [200 000–230 000]
HIV prevalence (15–49)	1.4 [1.2–1.4]	1.1 [0.9–1.2]	0.8 [0.7–0.8]

## LAWS AND POLICIES

Laws criminalizing the transmission of, non-disclosure of or exposure to HIV transmission	...
Criminalization of sex work among consenting adults	Any criminalization or punitive regulation of sex work
Criminalization of same-sex sexual acts in private	...
Criminalization of possession of small amounts of drugs	Yes
Criminalization of transgender people	...
Laws or policies restricting the entry, stay and residence of people living with HIV	No restrictions
Parental consent for adolescents to access HIV testing	Yes
Spousal consent for married women to access sexual and reproductive health services	No
Mandatory HIV testing for marriage, work or residence permits or for certain groups	No

## STIGMA AND DISCRIMINATION

Percentage of women and men aged 15–49 years who report discriminatory attitudes towards people living with HIV	...
Percentage of people living with HIV who report experienced stigma and discrimination in the general community in the last 12 months	2021 24.2
Percentage of people living with HIV who report experiences of HIV-related discrimination in health-care settings	2021 29.6

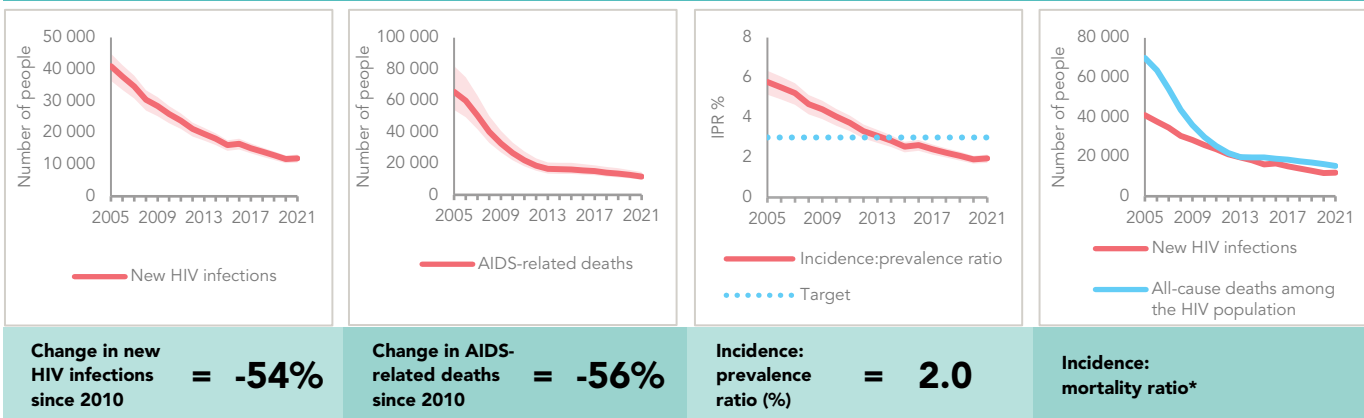
## GENDER INEQUALITY AND VIOLENCE

Proportion of ever-married or partnered women aged 15–49 years who experienced physical or sexual violence from a male intimate partner in the past 12 months	...
Percentage of women and men aged 15 to 49 years who agree that a husband is justified in hitting or beating his wife for specific reasons	...

## EXPENDITURES

	Financing sources					Total
	Domestic private	Domestic public	International: PEPFAR	International: Global Fund	International: all others	
Last available report: 2019	US\$ 1 466 640	US\$ 7 718 534	US\$ 92 697 314	US\$ 76 039 344	US\$ 2 425 235	US\$ 188 670 046

### EPIDEMIC TRANSITION METRICS



\* The incidence:mortality ratio is not published if the country has not achieved antiretroviral therapy coverage of 91% or higher (the testing and treatment target for 2025).

### KEY POPULATIONS

	Sex workers	Men who have sex with men	People who inject drugs	Transgender people	Prisoners
Estimated size of population	...	...	...	...	...
HIV prevalence	...	...	...	...	...
HIV testing and status awareness	98.8%	...	...	...	...
Antiretroviral therapy coverage	...	...	...	...	...
Condom use	...	...	...	...	...
Coverage of HIV prevention programmes	...	...	...	...	...
Avoidance of health care because of stigma and discrimination	...	...	...	...	...
Expenditures in US\$ (2019)	3 233 249	...	...	...	...

### HIV COMORBIDITIES

Estimated number of incident tuberculosis cases among people living with HIV (2020)	9900 [6900 -13 000]
People living with HIV who started TB preventive therapy (2020)	10 723
Cervical cancer screening of women living with HIV	...
People coinfectd with HIV and hepatitis C virus starting hepatitis C treatment	...

### HIV PREVENTION

Adults aged 15+ years with unsuppressed viral load	0.2%
Knowledge of HIV prevention among young people aged 15-24 years	...
— Women	...
— Men	...

Condom use at last sex with a non-marital, non-cohabiting partner among people aged 15-49 years	...
— Women	...
— Men	...

Women aged 15-49 years who have their demand for family planning satisfied by modern methods	...
----------------------------------------------------------------------------------------------	-----

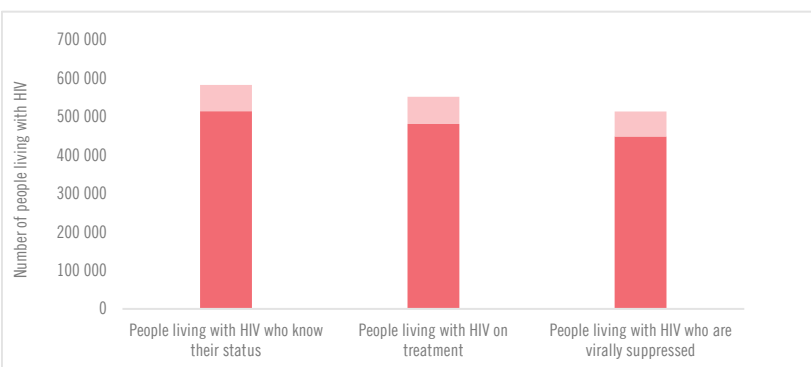
Men aged 15-49 years who are circumcised	...
------------------------------------------	-----

Voluntary medical male circumcisions performed according to national standards (2021)	27 516
---------------------------------------------------------------------------------------	--------

People who received PrEP at least once during the reporting period (2021)	10 812
---------------------------------------------------------------------------	--------

Harm reduction	
— Use of sterile injecting equipment at last injection	...
— Needles and syringes distributed per person who injects	...
— Coverage of agonist opioid methadone therapy	...
— Naloxone available (2022)	...

### HIV TESTING AND TREATMENT CASCADE



	84% [80-88%] 513 836	78% [75-82%] 480 264	75% [72-79%] 447 876
All ages			
Children (0-14)	36% [28-42%] 15 183	36% [28-42%] 15 183	33% [25-38%] 13 847
Women (15+)	87% [82-92%] 312 238	82% [77-87%] 294 605	79% [75-84%] 285 111
Men (15+)	89% [84-95%] 186 414	81% [77-87%] 170 476	77% [73-83%] 162 765

### ELIMINATION OF VERTICAL TRANSMISSION

	2015	2021
Percentage of pregnant women living with HIV accessing antiretroviral medicines	78% [60-86%]	78% [60-86%]
Final vertical transmission rate including during breastfeeding	18.5% [15.5-20.6%]	17.9% [15.0-19.9%]
Early infant diagnosis	34.4% [31.1-44.9%]	37.6% [34.0-48.9%]

## KENYA

## COUNTRY DATA

## EPIDEMIC ESTIMATES

	2010	2015	2021
<b>New HIV infections</b>			
New HIV infections (all ages)	73 000 [48 000–110 000]	47 000 [31 000–70 000]	35 000 [23 000–51 000]
New HIV infections (0–14)	17 000 [12 000–27 000]	7 100 [4 900–11 000]	5 200 [3 600–8 200]
New HIV infections (15–24)	25 000 [17 000–35 000]	17 000 [12 000–24 000]	12 000 [8 300–17 000]
New HIV infections (women, 15+)	35 000 [22 000–53 000]	27 000 [17 000–40 000]	21 000 [13 000–31 000]
New HIV infections (men, 15+)	21 000 [14 000–33 000]	13 000 [8 700–21 000]	8 900 [5 800–14 000]
HIV incidence (all ages) per 1000 population	2.04 [1.34–3.04]	1.15 [0.76–1.72]	0.73 [0.48–1.09]
<b>AIDS-related deaths</b>			
AIDS-related deaths (all ages)	56 000 [39 000–86 000]	35 000 [24 000–54 000]	22 000 [16 000–35 000]
AIDS-related deaths (0–14)	15 000 [8 300–27 000]	7 200 [4 000–13 000]	3 100 [1 700–5 700]
AIDS-related deaths (women, 15+)	27 000 [18 000–45 000]	13 000 [9 000–23 000]	9 000 [6 000–15 000]
AIDS-related deaths (men, 15+)	14 000 [9 500–20 000]	14 000 [10 000–21 000]	10 000 [7 200–15 000]
<b>People living with HIV</b>			
People living with HIV (all ages)	1 400 000 [1 300 000–1 600 000]	1 400 000 [1 300 000–1 600 000]	1 400 000 [1 300 000–1 600 000]
People living with HIV (0–14)	200 000 [160 000–250 000]	140 000 [110 000–170 000]	83 000 [66 000–100 000]
People living with HIV (women, 15+)	750 000 [680 000–870 000]	820 000 [730 000–940 000]	890 000 [790 000–1 000 000]
People living with HIV (men, 15+)	450 000 [400 000–520 000]	470 000 [420 000–540 000]	470 000 [420 000–540 000]
HIV prevalence (15–49)	5.7 [5.2–6.3]	5.0 [4.6–5.6]	4.0 [3.7–4.4]

## LAWS AND POLICIES

Laws criminalizing the transmission of, non-disclosure of or exposure to HIV transmission	...
Criminalization of sex work among consenting adults	Any criminalization or punitive regulation of sex work
Criminalization of same-sex sexual acts in private	Yes, imprisonment (up to 14 years)
Criminalization of possession of small amounts of drugs	Yes
Criminalization of transgender people	No
Laws or policies restricting the entry, stay and residence of people living with HIV	No restrictions
Parental consent for adolescents to access HIV testing	Yes
Spousal consent for married women to access sexual and reproductive health services	No
Mandatory HIV testing for marriage, work or residence permits or for certain groups	Yes

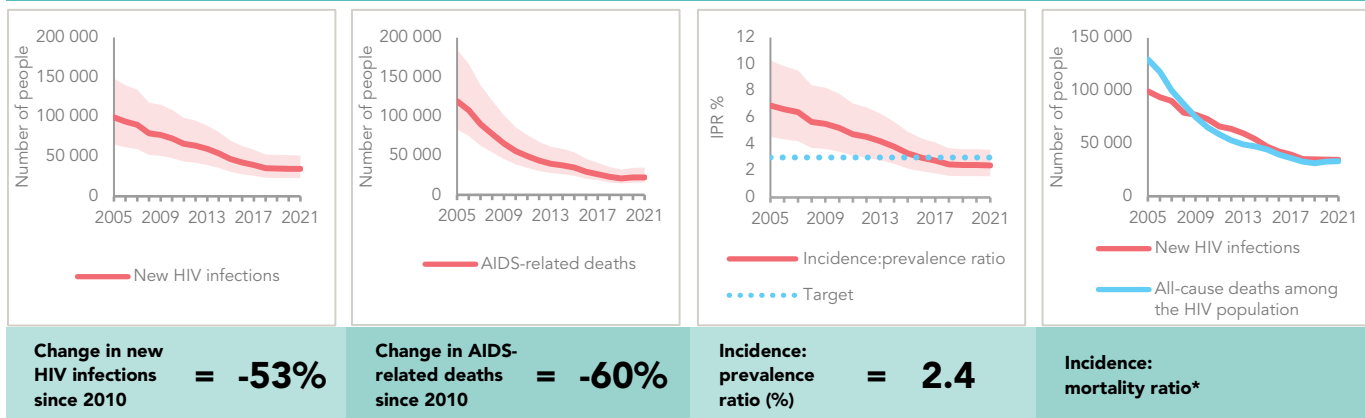
## STIGMA AND DISCRIMINATION

Percentage of women and men aged 15–49 years who report discriminatory attitudes towards people living with HIV	...
Percentage of people living with HIV who report experienced stigma and discrimination in the general community in the last 12 months	...
Percentage of people living with HIV who report experiences of HIV-related discrimination in health-care settings	...
<b>GENDER INEQUALITY AND VIOLENCE</b>	
Proportion of ever-married or partnered women aged 15–49 years who experienced physical or sexual violence from a male intimate partner in the past 12 months	...
Percentage of women and men aged 15 to 49 years who agree that a husband is justified in hitting or beating his wife for specific reasons	...

## EXPENDITURES

	Financing sources					Total
	Domestic private	Domestic public	International: PEPFAR	International: Global Fund	International: all others	
Last available report: 2021	US\$ 124 695 314	US\$ 351 421 789	US\$ 315 221 749	US\$ 79 938 180	US\$ 531 074	US\$ 871 808 106

### EPIDEMIC TRANSITION METRICS



\* The incidence:mortality ratio is not published if the country has not achieved antiretroviral therapy coverage of 91% or higher (the testing and treatment target for 2025).

### KEY POPULATIONS

	Sex workers	Men who have sex with men	People who inject drugs	Transgender people	Prisoners
Estimated size of population	197 100	...	...	...	...
HIV prevalence	...	...	...	...	...
HIV testing and status awareness	95.5%	...	94.0%	...	...
Antiretroviral therapy coverage	73%	62.8%	67.6%	...	...
Condom use	92%	...	75.9%	...	...
Coverage of HIV prevention programmes	...	...	...	...	...
Avoidance of health care because of stigma and discrimination	...	...	...	...	...
Expenditures in US\$ (2021)	1 285 491	1 892 306	2 756 560	...	...

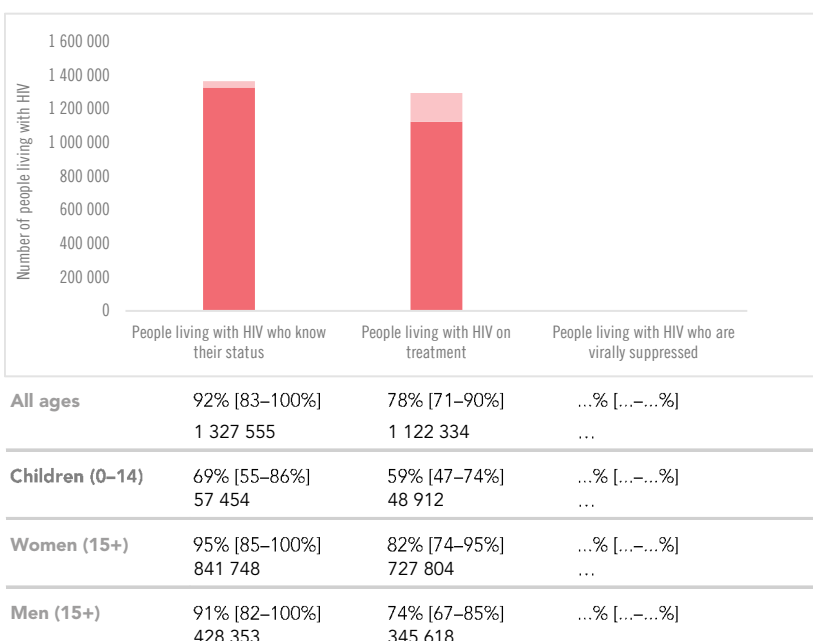
### HIV COMORBIDITIES

Estimated number of incident tuberculosis cases among people living with HIV (2020)	35 000 [22 000 -51 000]
People living with HIV who started TB preventive therapy (2020)	97 082
Cervical cancer screening of women living with HIV	...
People coinfectd with HIV and hepatitis C virus starting hepatitis C treatment	...

### HIV PREVENTION

Adults aged 15+ years with unsuppressed viral load	...
Knowledge of HIV prevention among young people aged 15-24 years	...
— Women	...
— Men	...
Condom use at last sex with a non-marital, non-cohabiting partner among people aged 15-49 years	...
— Women	...
— Men	...
Women aged 15-49 years who have their demand for family planning satisfied by modern methods	...
Men aged 15-49 years who are circumcised	...

### HIV TESTING AND TREATMENT CASCADE



### ELIMINATION OF VERTICAL TRANSMISSION

	2015	2021
Percentage of pregnant women living with HIV accessing antiretroviral medicines	86% [72-99%]	91% [76-100%]
Final vertical transmission rate including during breastfeeding	10.4% [7.9-14.1%]	8.9% [6.7-12.0%]
Early infant diagnosis	53.6% [46.7-64.2%]	64.9% [56.6-77.9%]

Voluntary medical male circumcisions performed according to national standards (2021)	54 703
People who received PrEP at least once during the reporting period (2021)	117 174
Harm reduction	
— Use of sterile injecting equipment at last injection (2017)	88.4%
— Needles and syringes distributed per person who injects (2021)	4
— Coverage of agonist opioid methadone therapy (2021)	13.3%
— Naloxone available (2022)	Yes

## LESOTHO

## COUNTRY DATA

## EPIDEMIC ESTIMATES

	2010	2015	2021
<b>New HIV infections</b>			
New HIV infections (all ages)	19 000 [17 000–22 000]	15 000 [14 000–17 000]	7400 [7100–7800]
New HIV infections (0–14)	2100 [1600–2500]	900 [680–1200]	690 [<500–940]
New HIV infections (15–24)	6700 [4700–8000]	5700 [3500–6700]	2600 [1500–3100]
New HIV infections (women, 15+)	9900 [8400–12 000]	8800 [7600–9700]	4300 [3900–4500]
New HIV infections (men, 15+)	7200 [6200–9400]	5700 [4900–6800]	2500 [2300–2800]
HIV incidence (all ages) per 1000 population	12.44 [10.88–14.82]	10.00 [8.70–11.08]	4.76 [4.53–5.04]
<b>AIDS-related deaths</b>			
AIDS-related deaths (all ages)	8700 [7300–12 000]	8000 [6300–11 000]	4500 [3800–5600]
AIDS-related deaths (0–14)	1800 [1500–2100]	1100 [810–1300]	560 [<500–760]
AIDS-related deaths (women, 15+)	3700 [2800–5200]	3300 [2400–4800]	2100 [1700–2700]
AIDS-related deaths (men, 15+)	3200 [2600–5500]	3600 [2900–5800]	1900 [1500–2400]
<b>People living with HIV</b>			
People living with HIV (all ages)	280 000 [270 000–310 000]	300 000 [280 000–330 000]	290 000 [270 000–310 000]
People living with HIV (0–14)	23 000 [20 000–25 000]	17 000 [14 000–19 000]	9700 [7300–11 000]
People living with HIV (women, 15+)	150 000 [140 000–170 000]	170 000 [160 000–190 000]	170 000 [160 000–190 000]
People living with HIV (men, 15+)	100 000 [96 000–120 000]	110 000 [100 000–130 000]	110 000 [100 000–120 000]
HIV prevalence (15–49)	24.2 [24.2–24.3]	24.6 [23.8–24.6]	20.9 [19.2–21.1]

## LAWS AND POLICIES

Laws criminalizing the transmission of, non-disclosure of or exposure to HIV transmission	...
Criminalization of sex work among consenting adults	Any criminalization or punitive regulation of sex work
Criminalization of same-sex sexual acts in private	No, laws penalizing consensual same-sex sexual acts have been decriminalized or have never existed anywhere in the country
Criminalization of possession of small amounts of drugs	Yes
Criminalization of transgender people	...
Laws or policies restricting the entry, stay and residence of people living with HIV	No restrictions
Parental consent for adolescents to access HIV testing	Yes
Spousal consent for married women to access sexual and reproductive health services	No
Mandatory HIV testing for marriage, work or residence permits or for certain groups	No

## STIGMA AND DISCRIMINATION

Percentage of women and men aged 15–49 years who report discriminatory attitudes towards people living with HIV	2014	2017
(2017 refers to women only)	13.9	17.3

Percentage of people living with HIV who report experienced stigma and discrimination in the general community in the last 12 months

...

Percentage of people living with HIV who report experiences of HIV-related discrimination in health-care settings

...

## GENDER INEQUALITY AND VIOLENCE

Proportion of ever-married or partnered women aged 15–49 years who experienced physical or sexual violence from a male intimate partner in the past 12 months

...

Percentage of women and men aged 15 to 49 years who agree that a husband is justified in hitting or beating his wife for specific reasons (Refers to women only)

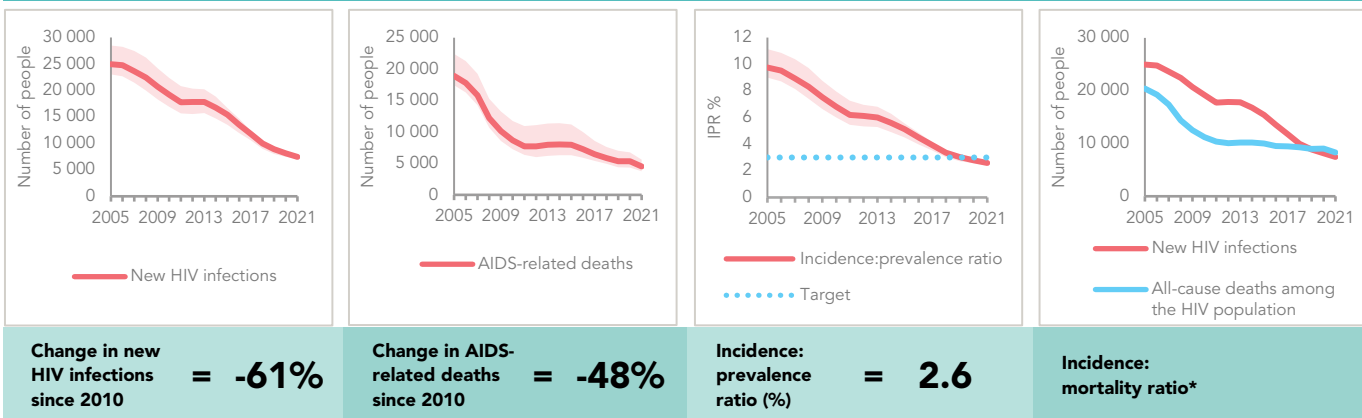
2018  
22.70

## EXPENDITURES

	Financing sources					Total
	Domestic private	Domestic public	International: PEPFAR	International: Global Fund	International: all others	
Last available report: 2017	US\$ 0	US\$ 20 847 761	US\$ 62 306 071	US\$ 24 636 737	US\$ 144 355	US\$ 110 299 410



### EPIDEMIC TRANSITION METRICS



\* The incidence:mortality ratio is not published if the country has not achieved antiretroviral therapy coverage of 91% or higher (the testing and treatment target for 2025).

### KEY POPULATIONS

	Sex workers	Men who have sex with men	People who inject drugs	Transgender people	Prisoners
Estimated size of population	...	...	...	...	...
HIV prevalence	...	...	...	...	31.4%
HIV testing and status awareness	63.8%	82.2%	...	...	...
Antiretroviral therapy coverage	...	...	...	...	80.1%
Condom use	62.3%	46.4%	...	...	...
Coverage of HIV prevention programmes	...	...	...	...	...
Avoidance of health care because of stigma and discrimination	8%	8%	...	...	...
Expenditures in US\$ (2017)	260 343	188 263	...	...	...

### HIV COMORBIDITIES

Estimated number of incident tuberculosis cases among people living with HIV (2020)	8200 [5000 -12 000]
People living with HIV who started TB preventive therapy (2020)	18 697
Cervical cancer screening of women living with HIV	...
People coinfectd with HIV and hepatitis C virus starting hepatitis C treatment	...

### HIV PREVENTION

Adults aged 15+ years with unsuppressed viral load	4.5%
Knowledge of HIV prevention among young people aged 15-24 years	...
— Women	...
— Men	...

Condom use at last sex with a non-marital, non-cohabiting partner among people aged 15-49 years	...
— Women	...
— Men	...

Women aged 15-49 years who have their demand for family planning satisfied by modern methods	...
----------------------------------------------------------------------------------------------	-----

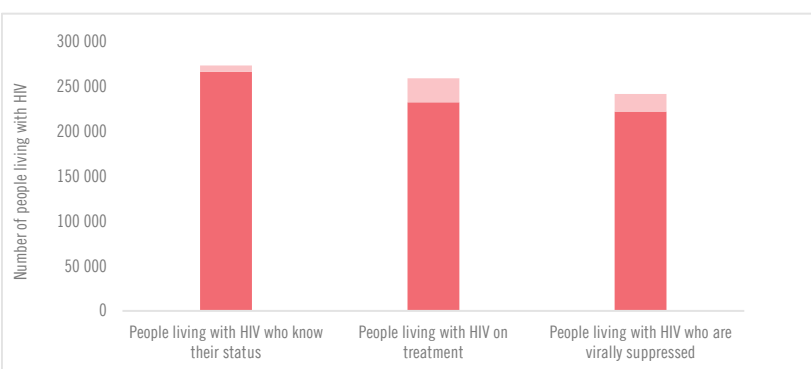
Men aged 15-49 years who are circumcised (2019)	68.5%
-------------------------------------------------	-------

Voluntary medical male circumcisions performed according to national standards (2021)	13 695
---------------------------------------------------------------------------------------	--------

People who received PrEP at least once during the reporting period (2021)	15 749
---------------------------------------------------------------------------	--------

Harm reduction	...
— Use of sterile injecting equipment at last injection	...
— Needles and syringes distributed per person who injects	...
— Coverage of agonist opioid methadone therapy	...
— Naloxone available (2022)	...

### HIV TESTING AND TREATMENT CASCADE



	People living with HIV who know their status	People living with HIV on treatment	People living with HIV who are virally suppressed
All ages	92% [88-100%] 266 170	81% [77-87%] 232 439	79% [75-85%] 222 000
Children (0-14)	64% [49-76%] 6239	64% [49-76%] 6239	60% [45-70%] 5779
Women (15+)	94% [89-100%] 161 427	85% [80-92%] 145 066	83% [79-91%] 142 778
Men (15+)	92% [87-100%] 98 504	76% [71-84%] 81 134	74% [70-82%] 79 222

### ELIMINATION OF VERTICAL TRANSMISSION

	2015	2021
Percentage of pregnant women living with HIV accessing antiretroviral medicines	95% [80-100%]	86% [69-97%]
Final vertical transmission rate including during breastfeeding	8.2% [7.0-9.9%]	7.9% [5.0-9.7%]
Early infant diagnosis	>95% [86.3- >95%]	63.3% [56.2-79.7%]

## MADAGASCAR

## COUNTRY DATA

## EPIDEMIC ESTIMATES

	2010	2015	2021
<b>New HIV infections</b>			
New HIV infections (all ages)	2800 [2200–3500]	5600 [4600–7000]	9500 [6900–13 000]
New HIV infections (0–14)	<500 [<500– <500]	590 [<500–720]	1000 [800–1400]
New HIV infections (15–24)	<500 [<500–620]	1000 [820–1300]	1700 [1200–2500]
New HIV infections (women, 15+)	1300 [1100–1700]	2700 [2200–3400]	4800 [3400–6900]
New HIV infections (men, 15+)	1200 [930–1500]	2300 [1800–2900]	3700 [2600–5400]
HIV incidence (all ages) per 1000 population	0.14 [0.11–0.17]	0.24 [0.19–0.30]	0.35 [0.25–0.49]
<b>AIDS-related deaths</b>			
AIDS-related deaths (all ages)	550 [<500–770]	1400 [1100–1800]	2900 [2300–3700]
AIDS-related deaths (0–14)	<200 [<200– <200]	<500 [<500– <500]	620 [<500–820]
AIDS-related deaths (women, 15+)	<200 [<200– <500]	530 [<500–690]	1200 [910–1500]
AIDS-related deaths (men, 15+)	<500 [<200– <500]	550 [<500–750]	1100 [840–1400]
<b>People living with HIV</b>			
People living with HIV (all ages)	13 000 [9700–16 000]	29 000 [24 000–35 000]	60 000 [48 000–77 000]
People living with HIV (0–14)	690 [520–930]	1600 [1300–2000]	3500 [2900–4400]
People living with HIV (women, 15+)	6100 [4700–8000]	15 000 [12 000–18 000]	32 000 [25 000–40 000]
People living with HIV (men, 15+)	5800 [4400–7500]	13 000 [10 000–16 000]	25 000 [20 000–32 000]
HIV prevalence (15–49)	0.1 [<0.1–0.1]	0.2 [0.2–0.3]	0.4 [0.3–0.5]

## LAWS AND POLICIES

Laws criminalizing the transmission of, non-disclosure of or exposure to HIV transmission	...
Criminalization of sex work among consenting adults	Any criminalization or punitive regulation of sex work
Criminalization of same-sex sexual acts in private	...
Criminalization of possession of small amounts of drugs	Yes
Criminalization of transgender people	...
Laws or policies restricting the entry, stay and residence of people living with HIV	No restrictions
Parental consent for adolescents to access HIV testing	Yes
Spousal consent for married women to access sexual and reproductive health services	No
Mandatory HIV testing for marriage, work or residence permits or for certain groups	No

## STIGMA AND DISCRIMINATION

Percentage of women aged 15–49 years who report discriminatory attitudes towards people living with HIV	...	2018
Percentage of people living with HIV who report experienced stigma and discrimination in the general community in the last 12 months	...	72.2
Percentage of people living with HIV who report experienced stigma and discrimination in the general community in the last 12 months	...	...

Percentage of people living with HIV who report experiences of HIV-related discrimination in health-care settings	...
-------------------------------------------------------------------------------------------------------------------	-----

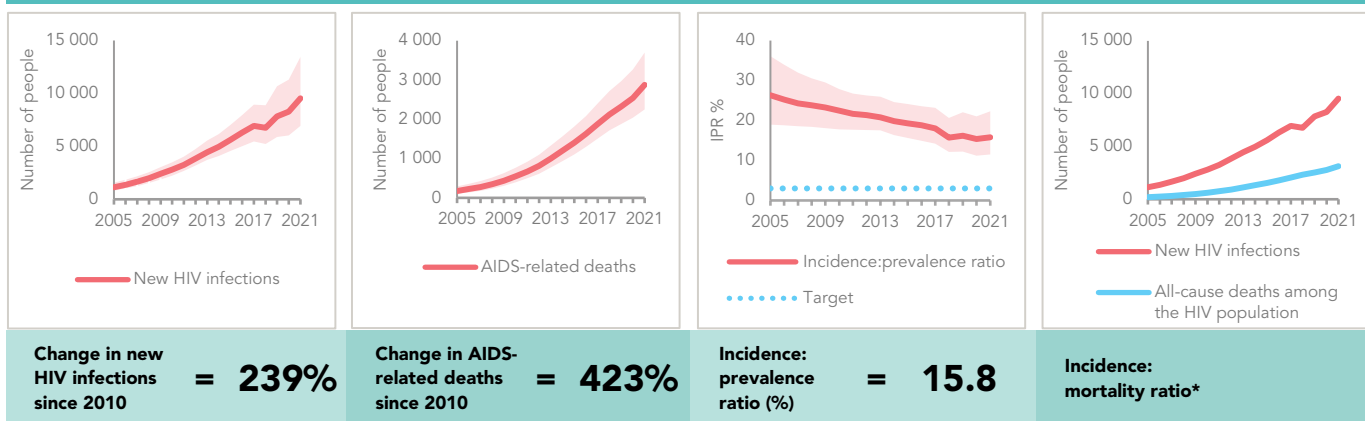
## GENDER INEQUALITY AND VIOLENCE

Proportion of ever-married or partnered women aged 15–49 years who experienced physical or sexual violence from a male intimate partner in the past 12 months	2018	16
Percentage of women and men aged 15 to 49 years who agree that a husband is justified in hitting or beating his wife for specific reasons (Refers to women only)	2018	28.50

## EXPENDITURES

	Financing sources					Total
	Domestic private	Domestic public	International: PEPFAR	International: Global Fund	International: all others	
Last available report: 2019	US\$ 3	US\$ 1652	US\$ 0	US\$ 1553	US\$ 183	US\$ 3919

### EPIDEMIC TRANSITION METRICS



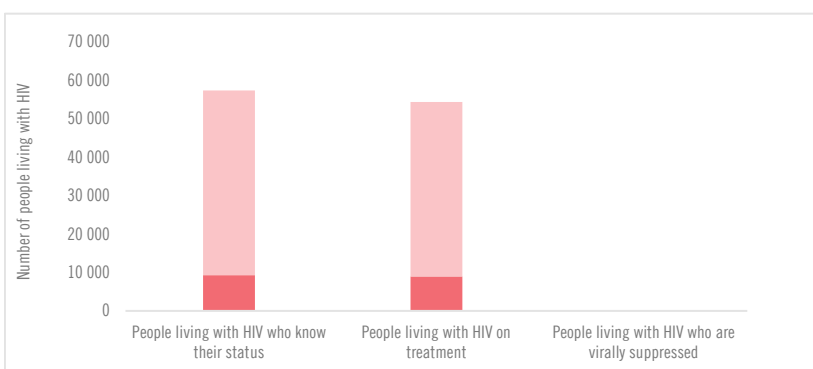
\* The incidence:mortality ratio is not published if the country has not achieved antiretroviral therapy coverage of 91% or higher (the testing and treatment target for 2025).

### KEY POPULATIONS

	Sex workers	Men who have sex with men	People who inject drugs	Transgender people	Prisoners
Estimated size of population	...	...	...	...	...
HIV prevalence	...	...	...	...	0.3%
HIV testing and status awareness	100%**	100%**	100%**	...	...
Antiretroviral therapy coverage	...	...	...	...	...
Condom use	...	...	...	...	...
Coverage of HIV prevention programmes	...	...	...	...	...
Avoidance of health care because of stigma and discrimination	...	...	...	...	...
Expenditures in US\$ (2017)	198 919	105 376	14 599	...	...

\*\* Programme data—not representative; includes people with negative results.

### HIV TESTING AND TREATMENT CASCADE



	People living with HIV who know their status	People living with HIV on treatment	People living with HIV who are virally suppressed
<b>All ages</b>	15% [12–20%] 9277	15% [12–19%] 8995	...% [...–...%] ...
<b>Children (0–14)</b>	8% [6–10%] 271	7% [6–9%] 256	...% [...–...%] ...
<b>Women (15+)</b>	17% [13–21%] 5245	16% [13–21%] 5085	...% [...–...%] ...
<b>Men (15+)</b>	15% [12–19%] 3761	15% [12–19%] 3654	...% [...–...%] ...

### ELIMINATION OF VERTICAL TRANSMISSION

	2015	2021
Percentage of pregnant women living with HIV accessing antiretroviral medicines	4% [3–5%]	15% [12–20%]
Final vertical transmission rate including during breastfeeding	45.0% [42.3–47.8%]	41.3% [38.8–44.7%]
Early infant diagnosis	...% [...–...%]	...% [...–...%]

### HIV COMORBIDITIES

Estimated number of incident tuberculosis cases among people living with HIV (2020)	1100 [680–1500]
People living with HIV who started TB preventive therapy (2020)	...
Cervical cancer screening of women living with HIV	...
People coinfectd with HIV and hepatitis C virus starting hepatitis C treatment	...

### HIV PREVENTION

Adults aged 15+ years with unsuppressed viral load	...
Knowledge of HIV prevention among young people aged 15–24 years	...
— Women	...
— Men	...
Condom use at last sex with a non-marital, non-cohabiting partner among people aged 15–49 years	...
— Women	...
— Men	...
Women aged 15–49 years who have their demand for family planning satisfied by modern methods	...
Men aged 15–49 years who are circumcised	Not applicable
Voluntary medical male circumcisions performed according to national standards	Not applicable
People who received PrEP at least once during the reporting period	...
<b>Harm reduction</b>	
— Use of sterile injecting equipment at last injection	...
— Needles and syringes distributed per person who injects (2019)	113
— Coverage of agonist opioid methadone therapy	...
— Naloxone available (2022)	...

## MALAWI

## COUNTRY DATA

## EPIDEMIC ESTIMATES

	2010	2015	2021
<b>New HIV infections</b>			
New HIV infections (all ages)	59 000 [52 000–69 000]	39 000 [34 000–44 000]	20 000 [16 000–24 000]
New HIV infections (0–14)	15 000 [12 000–17 000]	6 700 [4 100–8 500]	3 000 [2 100–4 200]
New HIV infections (15–24)	16 000 [10 000–19 000]	12 000 [7 300–15 000]	6 300 [3 700–7 600]
New HIV infections (women, 15+)	24 000 [20 000–28 000]	19 000 [16 000–22 000]	11 000 [8 100–13 000]
New HIV infections (men, 15+)	20 000 [16 000–25 000]	13 000 [11 000–16 000]	6 100 [4 700–7 800]
HIV incidence (all ages) per 1000 population	4.40 [3.91–5.20]	2.59 [2.23–2.98]	1.13 [0.91–1.37]
<b>AIDS-related deaths</b>			
AIDS-related deaths (all ages)	41 000 [36 000–51 000]	21 000 [18 000–28 000]	13 000 [11 000–17 000]
AIDS-related deaths (0–14)	12 000 [10 000–14 000]	4 800 [3 500–6 000]	1 500 [1 200–1 900]
AIDS-related deaths (women, 15+)	14 000 [11 000–19 000]	6 800 [5 700–9 300]	4 900 [4 100–6 100]
AIDS-related deaths (men, 15+)	15 000 [12 000–21 000]	9 600 [7 500–15 000]	6 200 [4 900–9 500]
<b>People living with HIV</b>			
People living with HIV (all ages)	930 000 [880 000–1 000 000]	980 000 [930 000–1 100 000]	990 000 [920 000–1 100 000]
People living with HIV (0–14)	130 000 [110 000–140 000]	97 000 [80 000–110 000]	58 000 [46 000–68 000]
People living with HIV (women, 15+)	460 000 [440 000–500 000]	530 000 [500 000–570 000]	570 000 [530 000–620 000]
People living with HIV (men, 15+)	340 000 [310 000–380 000]	360 000 [330 000–400 000]	360 000 [330 000–400 000]
HIV prevalence (15–49)	10.7 [10.4–11.1]	9.7 [9.3–10.1]	7.7 [7.1–8.0]

## LAWS AND POLICIES

Laws criminalizing the transmission of, non-disclosure of or exposure to HIV transmission	No, but prosecutions exist based on general criminal laws
Criminalization of sex work among consenting adults	Any criminalization or punitive regulation of sex work
Criminalization of same-sex sexual acts in private	Yes, imprisonment (up to 14 years)
Criminalization of possession of small amounts of drugs	Yes
Criminalization of transgender people	Yes
Laws or policies restricting the entry, stay and residence of people living with HIV	No restrictions
Parental consent for adolescents to access HIV testing	Yes
Spousal consent for married women to access sexual and reproductive health services	No
Mandatory HIV testing for marriage, work or residence permits or for certain groups	No

## STIGMA AND DISCRIMINATION

Percentage of women and men aged 15–49 years who report discriminatory attitudes towards people living with HIV	2016	2020
(2020 refers to women only)	17.6	20.9

Percentage of people living with HIV who report experienced stigma and discrimination in the general community in the last 12 months

...

Percentage of people living with HIV who report experiences of HIV-related discrimination in health-care settings

...

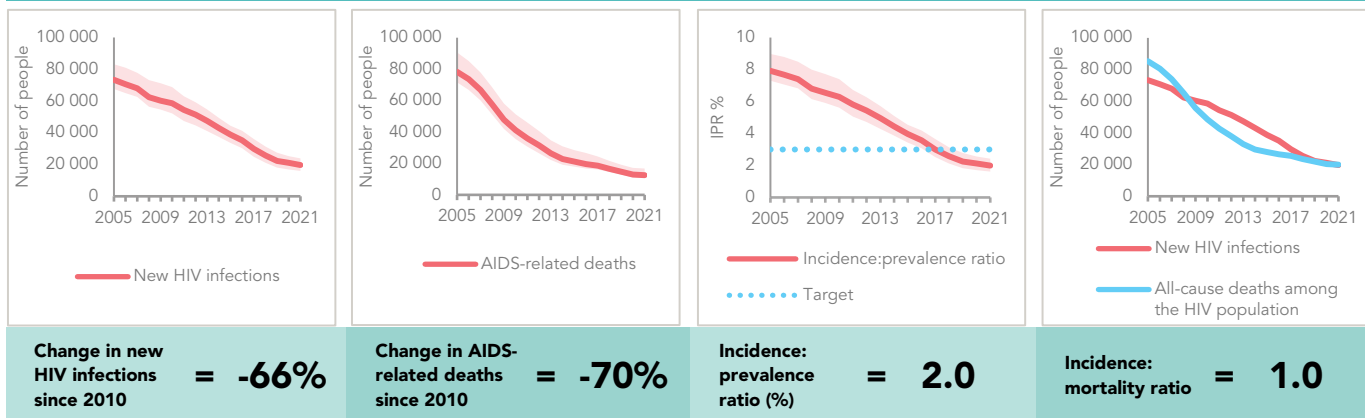
## GENDER INEQUALITY AND VIOLENCE

Proportion of ever-married or partnered women aged 15–49 years who experienced physical or sexual violence from a male intimate partner in the past 12 months	...
Percentage of women and men aged 15 to 49 years who agree that a husband is justified in hitting or beating his wife for specific reasons (Refers to women only)	2020 11.81

## EXPENDITURES

	Financing sources					Total
	Domestic private	Domestic public	International: PEPFAR	International: Global Fund	International: all others	
Last available report: 2021	US\$ 0	US\$ 5 658 000	US\$ 113 272 000	US\$ 77 543 000	US\$ 10 843 000	US\$ 207 316 000

### EPIDEMIC TRANSITION METRICS

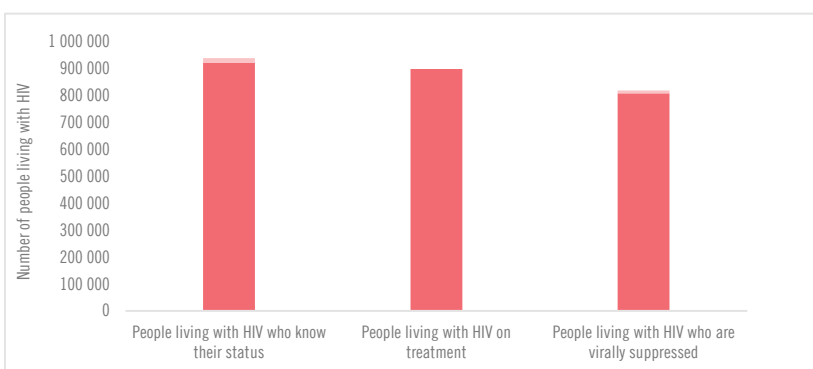


### KEY POPULATIONS

	Sex workers	Men who have sex with men	People who inject drugs	Transgender people	Prisoners
Estimated size of population	36 100	...	...	...	...
HIV prevalence	49.9%	12.9%	...	...	19%
HIV testing and status awareness	99.2%	79.4%	...	80.8%**	...
Antiretroviral therapy coverage	90.7%	85.5%	...	91.5%	100%
Condom use	65%	79.4%	...	49.7%	...
Coverage of HIV prevention programmes	68%	65%	...	...	...
Avoidance of health care because of stigma and discrimination	49%	12.9%	...	...	...
Expenditures in US\$ (2020)	14 392	54 520	...	...	...

\*\* Programme data—not representative; includes people with negative results.

### HIV TESTING AND TREATMENT CASCADE



	2015	2021
Percentage of pregnant women living with HIV accessing antiretroviral medicines	80% [64–89%]	93% [73–100%]
Final vertical transmission rate including during breastfeeding	14.1% [10.8–16.0%]	7.5% [6.1–9.9%]
Early infant diagnosis	23.0% [20.6–28.4%]	79.0% [71.1– >95%]

### ELIMINATION OF VERTICAL TRANSMISSION

	2015	2021
Percentage of pregnant women living with HIV accessing antiretroviral medicines	80% [64–89%]	93% [73–100%]
Final vertical transmission rate including during breastfeeding	14.1% [10.8–16.0%]	7.5% [6.1–9.9%]
Early infant diagnosis	23.0% [20.6–28.4%]	79.0% [71.1– >95%]

### HIV COMORBIDITIES

Estimated number of incident tuberculosis cases among people living with HIV (2020)	12 000 [6400–19 000]
People living with HIV who started TB preventive therapy (2020)	25 316
Cervical cancer screening of women living with HIV (2016)	18.7%
People coinfectd with HIV and hepatitis C virus starting hepatitis C treatment	...

### HIV PREVENTION

Adults aged 15+ years with unsuppressed viral load	1.1%
Knowledge of HIV prevention among young people aged 15–24 years	...
— Women	...
— Men	...

Condom use at last sex with a non-marital, non-cohabiting partner among people aged 15–49 years	...
— Women	...
— Men	...

Women aged 15–49 years who have their demand for family planning satisfied by modern methods	...
----------------------------------------------------------------------------------------------	-----

Men aged 15–49 years who are circumcised	...
------------------------------------------	-----

Voluntary medical male circumcisions performed according to national standards (2021)	145 759
---------------------------------------------------------------------------------------	---------

People who received PrEP at least once during the reporting period (2021)	10 971
---------------------------------------------------------------------------	--------

Harm reduction	
— Use of sterile injecting equipment at last injection	...
— Needles and syringes distributed per person who injects	...
— Coverage of agonist opioid methadone therapy	...
— Naloxone available (2022)	No

## MAURITIUS

## COUNTRY DATA

## EPIDEMIC ESTIMATES

	2010	2015	2021
<b>New HIV infections</b>			
New HIV infections (all ages)	1200 [1000–1500]	850 [670–1100]	660 [<500–950]
New HIV infections (0–14)	<100 [<100– <100]	<100 [<100– <100]	<100 [<100– <100]
New HIV infections (15–24)	<500 [<500– <500]	<200 [<200– <500]	<200 [<100– <200]
New HIV infections (women, 15+)	<500 [<500–570]	<500 [<500–510]	<500 [<500– <500]
New HIV infections (men, 15+)	720 [600–900]	<500 [<500–590]	<500 [<500–500]
HIV incidence (all ages) per 1000 population	1.01 [0.87–1.24]	0.70 [0.56–0.91]	0.54 [0.37–0.78]
<b>AIDS-related deaths</b>			
AIDS-related deaths (all ages)	...	...	...
AIDS-related deaths (0–14)	...	...	...
AIDS-related deaths (women, 15+)	...	...	...
AIDS-related deaths (men, 15+)	...	...	...
<b>People living with HIV</b>			
People living with HIV (all ages)	12 000 [11 000–13 000]	12 000 [11 000–15 000]	12 000 [10 000–14 000]
People living with HIV (0–14)	<100 [<100– <200]	<100 [<100– <200]	<100 [<100– <100]
People living with HIV (women, 15+)	4400 [3900–5000]	4800 [4300–5600]	4900 [4300–5900]
People living with HIV (men, 15+)	7200 [6200–8300]	7500 [6600–8900]	6700 [5700–7900]
HIV prevalence (15–49)	1.5 [1.4–1.6]	1.5 [1.5–1.6]	1.4 [1.2–1.5]

## LAWS AND POLICIES

Laws criminalizing the transmission of, non-disclosure of or exposure to HIV transmission	No
Criminalization of sex work among consenting adults	Any criminalization or punitive regulation of sex work
Criminalization of same-sex sexual acts in private	Yes, imprisonment (up to 14 years)
Criminalization of possession of small amounts of drugs	Yes
Criminalization of transgender people	...
Laws or policies restricting the entry, stay and residence of people living with HIV	Prohibit short- and/or long-stay and require HIV testing or disclosure for some permits
Parental consent for adolescents to access HIV testing	Yes
Spousal consent for married women to access sexual and reproductive health services	No
Mandatory HIV testing for marriage, work or residence permits or for certain groups	Yes

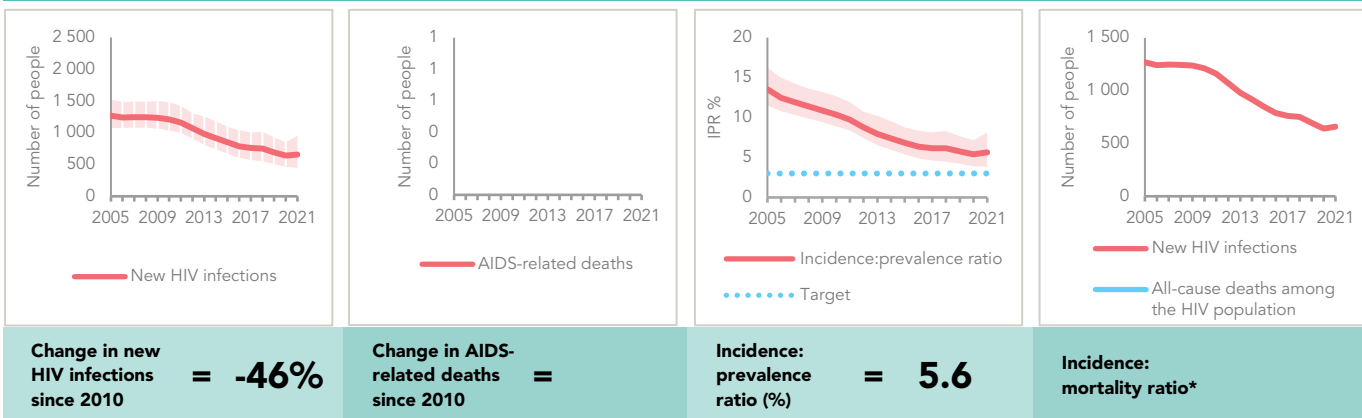
## STIGMA AND DISCRIMINATION

Percentage of women and men aged 15–49 years who report discriminatory attitudes towards people living with HIV	...
Percentage of people living with HIV who report experienced stigma and discrimination in the general community in the last 12 months	...
Percentage of people living with HIV who report experiences of HIV-related discrimination in health-care settings	...
Proportion of ever-married or partnered women aged 15–49 years who experienced physical or sexual violence from a male intimate partner in the past 12 months	...
Percentage of women and men aged 15 to 49 years who agree that a husband is justified in hitting or beating his wife for specific reasons	...

## EXPENDITURES

	Financing sources					Total
	Domestic private	Domestic public	International: PEPFAR	International: Global Fund	International: all others	
Last available report: 2010	US\$ 265 468	US\$ 4 894 627	...	US\$ 1 675 382	US\$ 397 312	US\$ 7 524 015

### EPIDEMIC TRANSITION METRICS



\* The incidence:mortality ratio is not published if the country has not achieved antiretroviral therapy coverage of 91% or higher (the testing and treatment target for 2025).

### KEY POPULATIONS

	Sex workers	Men who have sex with men	People who inject drugs	Transgender people	Prisoners
Estimated size of population	...	...	...	...	2700
HIV prevalence	18.2%	...	21.2%	28.4%	17.3%
HIV testing and status awareness	85.3%	...	...	...	...
Antiretroviral therapy coverage	...	...	51.7%	...	82%
Condom use	76.3%	...	28.2%	45.4%	...
Coverage of HIV prevention programmes	...	...	...	...	...
Avoidance of health care because of stigma and discrimination	...	...	...	...	...
Expenditures in US\$	...	...	...	...	...

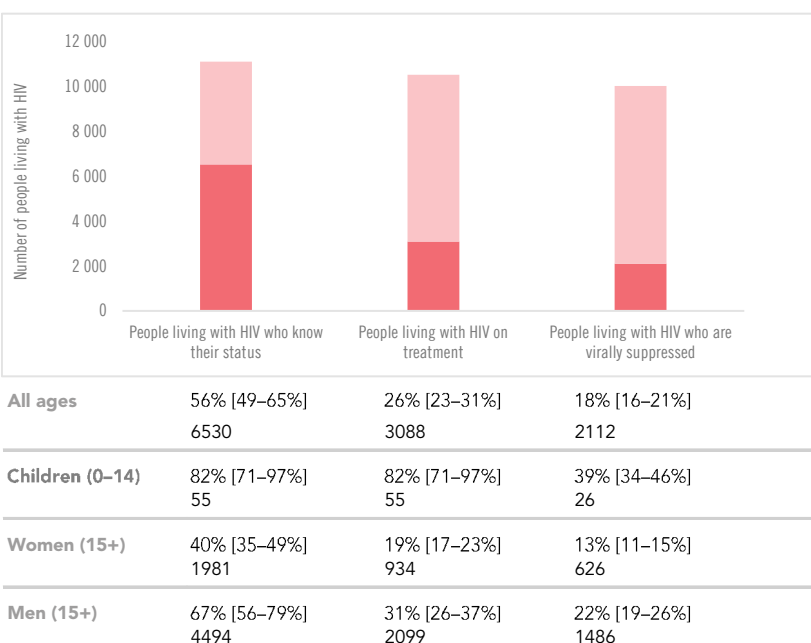
### HIV COMORBIDITIES

Estimated number of incident tuberculosis cases among people living with HIV (2020)	28 [16–44]
People living with HIV who started TB preventive therapy (2020)	...
Cervical cancer screening of women living with HIV	...
People coinfectd with HIV and hepatitis C virus starting hepatitis C treatment (2019)	17.7%

### HIV PREVENTION

Adults aged 15+ years with unsuppressed viral load	0.9%
Knowledge of HIV prevention among young people aged 15–24 years	...
— Women	...
— Men	...
Condom use at last sex with a non-marital, non-cohabiting partner among people aged 15–49 years	...
— Women	...
— Men	...
Women aged 15–49 years who have their demand for family planning satisfied by modern methods	...

### HIV TESTING AND TREATMENT CASCADE



### ELIMINATION OF VERTICAL TRANSMISSION

	2015	2021
Percentage of pregnant women living with HIV accessing antiretroviral medicines	75% [64–86%]	100% [86–100%]
Final vertical transmission rate including during breastfeeding	10.4% [7.9–12.6%]	5.3% [4.7–8.0%]
Early infant diagnosis	30.3% [26.4–35.6%]	58.0% [48.9–68.4%]

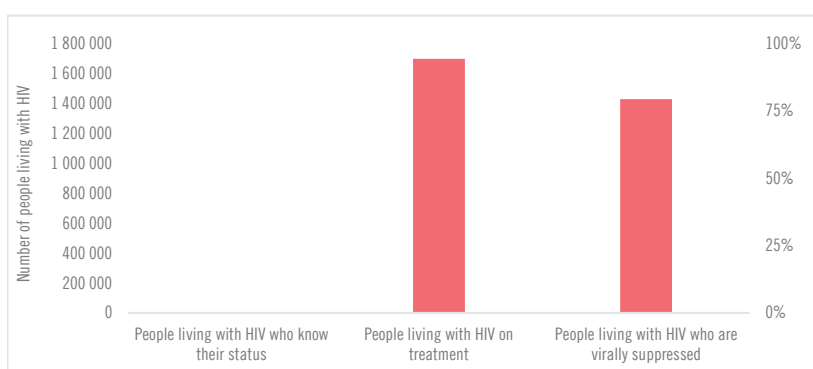
Men aged 15–49 years who are circumcised	Not applicable
Voluntary medical male circumcisions performed according to national standards	Not applicable
People who received PrEP at least once during the reporting period (2021)	19
Harm reduction	
— Use of sterile injecting equipment at last injection (2017)	92.2%
— Needles and syringes distributed per person who injects (2018)	89
— Coverage of agonist opioid methadone therapy (2018)	53.6%
— Naloxone available (2022)	...

# MOZAMBIQUE

## KEY POPULATIONS

	Sex workers	Men who have sex with men	People who inject drugs	Transgender people	Prisoners
Estimated size of population	...	...	...	...	...
HIV prevalence	...	...	...	...	...
HIV testing and status awareness	...	...	...	...	...
Antiretroviral therapy coverage	...	...	...	...	...
Condom use	...	...	...	...	...
Coverage of HIV prevention programmes	...	...	...	...	...
Avoidance of health care because of stigma and discrimination	...	...	...	...	...
Expenditures in US\$ (2019)	144 055	227 062	...	...	184 300

## HIV TESTING AND TREATMENT CASCADE



Category	People living with HIV who know their status	People living with HIV on treatment	People living with HIV who are virally suppressed
All ages	...% [...-...%]	...% [...-...%] 1 698 176	...% [...-...%]
Children (0-14)	...% [...-...%]	...% [...-...%] 99 029	...% [...-...%]
Women (15+)	...% [...-...%]	...% [...-...%] 1 055 633	...% [...-...%]
Men (15+)	...% [...-...%]	...% [...-...%] 543 514	...% [...-...%]

## HIV COMORBIDITIES

Estimated number of incident tuberculosis cases among people living with HIV (2020)	32 000 [19 000 -47 000]
People living with HIV who started TB preventive therapy (2020)	220 746
Cervical cancer screening of women living with HIV	...
People coinfectd with HIV and hepatitis C virus starting hepatitis C treatment	...

## HIV PREVENTION

Adults aged 15+ years with unsuppressed viral load	...
Knowledge of HIV prevention among young people aged 15-24 years	...
— Women	...
— Men	...
Condom use at last sex with a non-marital, non-cohabiting partner among people aged 15-49 years	...
— Women	...
— Men	...
Women aged 15-49 years who have their demand for family planning satisfied by modern methods	...
Men aged 15-49 years who are circumcised	...
Voluntary medical male circumcisions performed according to national standards (2021)	129 420
People who received PrEP at least once during the reporting period (2021)	57 717
Harm reduction	...
— Use of sterile injecting equipment at last injection	...
— Needles and syringes distributed per person who injects	...
— Coverage of agonist opioid methadone therapy	...
— Naloxone available (2022)	...

## EXPENDITURES

	Financing sources					Total
	Domestic private	Domestic public	International: PEPFAR	International: Global Fund	International: all others	
Last available report: 2019	US\$ 627 343	US\$ 23 591 832	US\$ 370 271 108	US\$ 78 547 589	US\$ 13 797 988	US\$ 557 780 695



## COUNTRY DATA

## LAWS AND POLICIES

Laws criminalizing the transmission of, non-disclosure of or exposure to HIV transmission	...
Criminalization of sex work among consenting adults	Sex work is not subject to punitive regulations and is not criminalized anywhere in the country
Criminalization of same-sex sexual acts in private	No, laws penalizing consensual same-sex sexual acts have been decriminalized or have never existed anywhere in the country
Criminalization of possession of small amounts of drugs	Yes
Criminalization of transgender people	...
Laws or policies restricting the entry, stay and residence of people living with HIV	No restrictions
Parental consent for adolescents to access HIV testing	Yes
Spousal consent for married women to access sexual and reproductive health services	No
Mandatory HIV testing for marriage, work or residence permits or for certain groups	No

## STIGMA AND DISCRIMINATION

Percentage of women and men aged 15–49 years who report discriminatory attitudes towards people living with HIV	...	...
Percentage of people living with HIV who report experienced stigma and discrimination in the general community in the last 12 months	...	...
Percentage of people living with HIV who report experiences of HIV-related discrimination in health-care settings	...	...

## GENDER INEQUALITY AND VIOLENCE

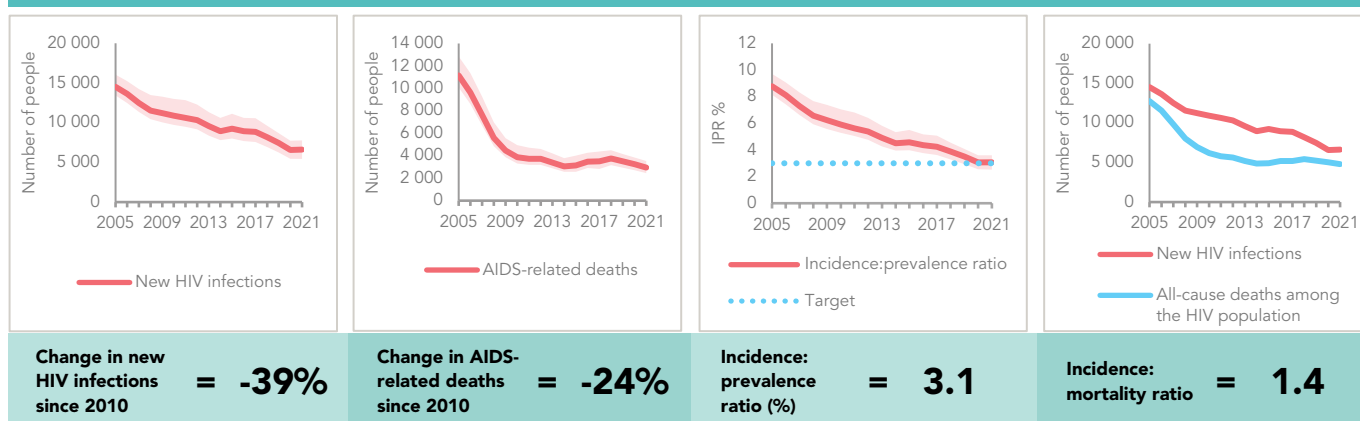
Proportion of ever-married or partnered women aged 15–49 years who experienced physical or sexual violence from a male intimate partner in the past 12 months	...
Percentage of women and men aged 15 to 49 years who agree that a husband is justified in hitting or beating his wife for specific reasons	...

# NAMIBIA

## EPIDEMIC ESTIMATES

	2010	2015	2021
<b>New HIV infections</b>			
New HIV infections (all ages)	11 000 [9700–13 000]	9200 [8000–11 000]	6600 [5400–7800]
New HIV infections (0–14)	1400 [1000–1700]	580 [500–860]	<500 [<500– <500]
New HIV infections (15–24)	3300 [2100–3900]	3300 [2200–3900]	2400 [1400–2800]
New HIV infections (women, 15+)	5700 [4800–6900]	5500 [4700–6600]	4100 [3300–4700]
New HIV infections (men, 15+)	3800 [3300–4900]	3200 [2700–4200]	2100 [1700–2500]
HIV incidence (all ages) per 1000 population	5.85 [5.20–7.08]	4.58 [3.95–5.55]	2.91 [2.40–3.46]
<b>AIDS-related deaths</b>			
AIDS-related deaths (all ages)	3900 [3300–5000]	3100 [2600–4000]	2900 [2500–3500]
AIDS-related deaths (0–14)	920 [710–1100]	<500 [<500–640]	<500 [<200– <500]
AIDS-related deaths (women, 15+)	1600 [1300–2200]	1400 [1100–1900]	1500 [1200–1800]
AIDS-related deaths (men, 15+)	1300 [1100–1900]	1300 [1000–1800]	1200 [1000–1500]
<b>People living with HIV</b>			
People living with HIV (all ages)	180 000 [170 000–200 000]	200 000 [190 000–220 000]	220 000 [200 000–240 000]
People living with HIV (0–14)	16 000 [14 000–17 000]	13 000 [11 000–14 000]	7600 [6500–8400]
People living with HIV (women, 15+)	100 000 [98 000–110 000]	120 000 [110 000–130 000]	130 000 [120 000–150 000]
People living with HIV (men, 15+)	64 000 [59 000–72 000]	70 000 [65 000–78 000]	74 000 [69 000–83 000]
HIV prevalence (15–49)	13.5 [13.0–14.3]	13.1 [12.6–13.6]	11.8 [11.1–12.4]

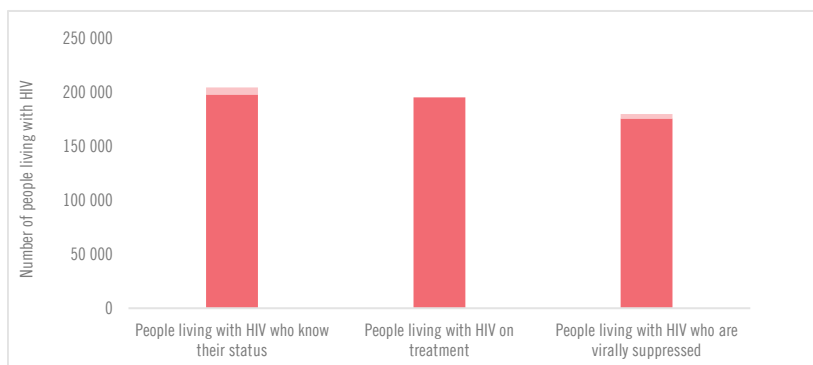
## EPIDEMIC TRANSITION METRICS



## EXPENDITURES

	Financing sources					Total
	Domestic private	Domestic public	International: PEPFAR	International: Global Fund	International: all others	
Last available report: 2016	US\$ 3 365 760	US\$ 96 140 893	US\$ 48 941 066	US\$ 13 271 251	US\$ 0	US\$ 162 654 206

## HIV TESTING AND TREATMENT CASCADE



<b>All ages</b>	92% [86–100%] 198 404	91% [85–100%] 195 715	84% [78–92%] 176 001
<b>Children (0–14)</b>	81% [70–90%] 6222	81% [70–90%] 6222	68% [58–75%] 5200
<b>Women (15+)</b>	95% [88–100%] 126 552	95% [88–100%] 126 552	89% [83–97%] 118 803
<b>Men (15+)</b>	88% [82–98%] 65 630	85% [79–94%] 62 941	77% [71–86%] 57 198

## ELIMINATION OF VERTICAL TRANSMISSION

	2015	2021
Percentage of pregnant women living with HIV accessing antiretroviral medicines	100% [89–100%]	100% [100–100%]
Final vertical transmission rate including during breastfeeding	5.4% [4.7–7.0%]	4.6% [4.1–5.1%]
Early infant diagnosis	16.3% [14.7–19.7%]	>95% [>95– >95%]

## RWANDA

## COUNTRY DATA

## EPIDEMIC ESTIMATES

	2010	2015	2021
<b>New HIV infections</b>			
New HIV infections (all ages)	9800 [9300–11 000]	6400 [6100–7800]	4300 [4000–5100]
New HIV infections (0–14)	2100 [1400–2500]	730 [670–940]	780 [<500–1100]
New HIV infections (15–24)	2600 [1900–3000]	1500 [1100–1900]	1000 [700–1200]
New HIV infections (women, 15+)	4400 [4200–5600]	3500 [3300–4400]	2300 [2100–2900]
New HIV infections (men, 15+)	3300 [3000–4200]	2200 [2000–2800]	1200 [1100–1600]
HIV incidence (all ages) per 1000 population	1.04 [0.98–1.22]	0.59 [0.57–0.73]	0.34 [0.32–0.40]
<b>AIDS-related deaths</b>			
AIDS-related deaths (all ages)	6500 [5600–7700]	3800 [3400–4800]	2400 [2100–2800]
AIDS-related deaths (0–14)	1700 [1300–1900]	660 [520–810]	<500 [<500–530]
AIDS-related deaths (women, 15+)	2400 [1900–3100]	1600 [1300–2000]	1000 [860–1200]
AIDS-related deaths (men, 15+)	2400 [2000–3100]	1600 [1300–2100]	1000 [870–1200]
<b>People living with HIV</b>			
People living with HIV (all ages)	220 000 [210 000–230 000]	220 000 [210 000–240 000]	230 000 [220 000–240 000]
People living with HIV (0–14)	26 000 [22 000–28 000]	18 000 [16 000–21 000]	9900 [7600–13 000]
People living with HIV (women, 15+)	120 000 [110 000–120 000]	130 000 [120 000–130 000]	140 000 [130 000–140 000]
People living with HIV (men, 15+)	76 000 [72 000–81 000]	80 000 [75 000–86 000]	82 000 [77 000–88 000]
HIV prevalence (15–49)	3.3 [3.2–3.5]	3.0 [2.8–3.2]	2.3 [2.2–2.5]

## LAWS AND POLICIES

Laws criminalizing the transmission of, non-disclosure of or exposure to HIV transmission	No, but prosecutions exist based on general criminal laws
Criminalization of sex work among consenting adults	Any criminalization or punitive regulation of sex work
Criminalization of same-sex sexual acts in private	No, laws penalizing consensual same-sex sexual acts have been decriminalized or have never existed anywhere in the country
Criminalization of possession of small amounts of drugs	Yes
Criminalization of transgender people	No
Laws or policies restricting the entry, stay and residence of people living with HIV	No restrictions
Parental consent for adolescents to access HIV testing	Yes
Spousal consent for married women to access sexual and reproductive health services	No
Mandatory HIV testing for marriage, work or residence permits or for certain groups	No

## STIGMA AND DISCRIMINATION

Percentage of women and men aged 15–49 years who report discriminatory attitudes towards people living with HIV	2015	2020
(2020 refers to women only)	9.9	12.8

Percentage of people living with HIV who report experienced stigma and discrimination in the general community in the last 12 months

...

Percentage of people living with HIV who report experiences of HIV-related discrimination in health-care settings

...

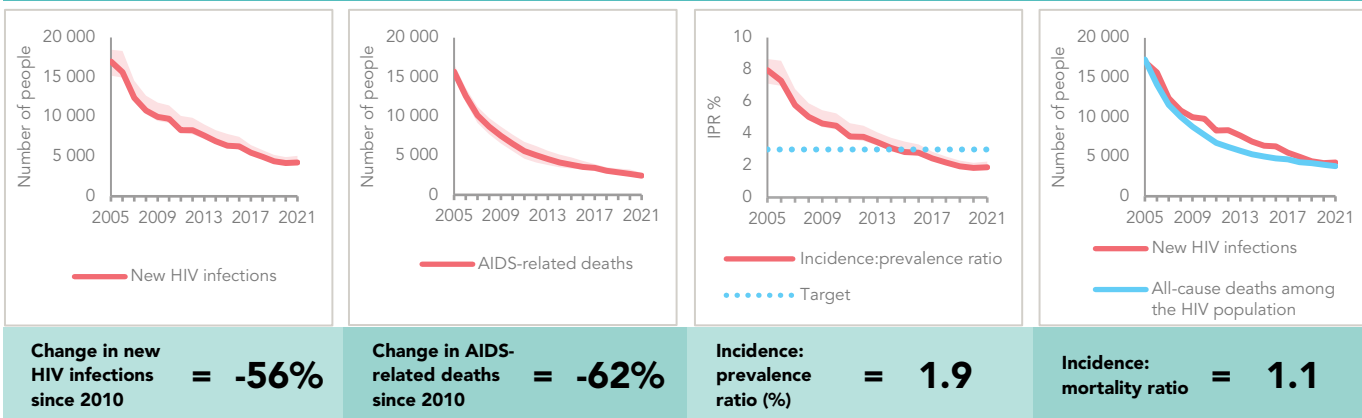
## GENDER INEQUALITY AND VIOLENCE

Proportion of ever-married or partnered women aged 15–49 years who experienced physical or sexual violence from a male intimate partner in the past 12 months	2020	23.8
Percentage of women and men aged 15 to 49 years who agree that a husband is justified in hitting or beating his wife for specific reasons	2020	40.50

## EXPENDITURES

	Financing sources					Total
	Domestic private	Domestic public	International: PEPFAR	International: Global Fund	International: all others	
Last available report: 2015	...	US\$ 19 877 495	US\$ 97 029 539	US\$ 95 605 601	US\$ 5 077 320	US\$ 217 589 955

### EPIDEMIC TRANSITION METRICS



### KEY POPULATIONS

	Sex workers	Men who have sex with men	People who inject drugs	Transgender people	Prisoners
Estimated size of population	13 700	...	...	...	...
HIV prevalence	35.5%	...	...	...	...
HIV testing and status awareness	77.2%	...	...	...	...
Antiretroviral therapy coverage	36.3%	...	...	...	...
Condom use	82%	54.9%	...	...	...
Coverage of HIV prevention programmes	...	...	...	...	...
Avoidance of health care because of stigma and discrimination	...	...	...	...	...
Expenditures in US\$ (2015)	218 310	240 246	...	...	...

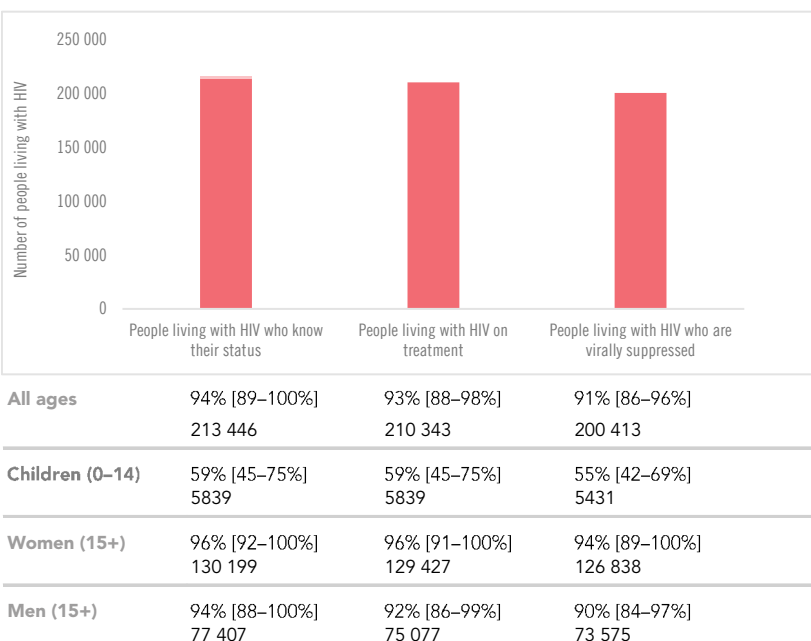
### HIV COMORBIDITIES

Estimated number of incident tuberculosis cases among people living with HIV (2020)	1500 [1100-1900]
People living with HIV who started TB preventive therapy (2020)	...
Cervical cancer screening of women living with HIV	...
People coinfectd with HIV and hepatitis C virus starting hepatitis C treatment	...

### HIV PREVENTION

Adults aged 15+ years with unsuppressed viral load	0.2%
Knowledge of HIV prevention among young people aged 15-24 years	...
— Women	...
— Men	...
Condom use at last sex with a non-marital, non-cohabiting partner among people aged 15-49 years	...
— Women	...
— Men	...
Women aged 15-49 years who have their demand for family planning satisfied by modern methods (2020)	73.7%

### HIV TESTING AND TREATMENT CASCADE



### ELIMINATION OF VERTICAL TRANSMISSION

	2015	2021
Percentage of pregnant women living with HIV accessing antiretroviral medicines	100% [88-100%]	87% [72-98%]
Final vertical transmission rate including during breastfeeding	7.8% [7.2-9.6%]	9.5% [7.1-11.7%]
Early infant diagnosis	84.1% [75.5- >95%]	...% [...-...%]

Men aged 15-49 years who are circumcised	...
Voluntary medical male circumcisions performed according to national standards (2021)	394 633
People who received PrEP at least once during the reporting period (2021)	8556
Harm reduction	
— Use of sterile injecting equipment at last injection	...
— Needles and syringes distributed per person who injects	...
— Coverage of agonist opioid methadone therapy	...
— Naloxone available (2022)	No

## SEYCHELLES

## KEY POPULATIONS

	Sex workers	Men who have sex with men	People who inject drugs	Transgender people	Prisoners
Estimated size of population	...	...	...	...	300
HIV prevalence	...	...	23%	...	4.8%
HIV testing and status awareness	...	...	91.1%**	...	
Antiretroviral therapy coverage	...	...	42%	...	...
Condom use	...	...	44.1%	...	
Coverage of HIV prevention programmes	...	...	75.4%	...	
Avoidance of health care because of stigma and discrimination	...	...	...	...	
Expenditures in US\$ (2021)	...	...	36 293	...	...

\*\* Programme data—not representative; includes people with negative results.

## HIV TESTING AND TREATMENT CASCADE



All ages	...% [...-...%]	...% [...-...%]	...% [...-...%]
Children (0-14)	...% [...-...%]	...% [...-...%]	...% [...-...%]
Women (15+)	...% [...-...%]	...% [...-...%]	...% [...-...%]
Men (15+)	...% [...-...%]	...% [...-...%]	...% [...-...%]

## HIV COMORBIDITIES

Estimated number of incident tuberculosis cases among people living with HIV (2020)	2 [0-6]
People living with HIV who started TB preventive therapy (2020)	...
Women who tested positive for HIV among those screened for cervical cancer (programme data) (2019)	100%
People coinfectd with HIV and hepatitis C virus starting hepatitis C treatment (2019)	10%

## HIV PREVENTION

Adults aged 15+ years with unsuppressed viral load	...
Knowledge of HIV prevention among young people aged 15-24 years	...
— Women	...
— Men	...
Condom use at last sex with a non-marital, non-cohabiting partner among people aged 15-49 years	...
— Women	...
— Men	...
Women aged 15-49 years who have their demand for family planning satisfied by modern methods	...
Men aged 15-49 years who are circumcised	Not applicable
Voluntary medical male circumcisions performed according to national standards	Not applicable
People who received PrEP at least once during the reporting period (2021)	1
Harm reduction	
— Use of sterile injecting equipment at last injection (2017)	58.5%
— Needles and syringes distributed per person who injects (2021)	5
— Coverage of agonist opioid methadone therapy (2021)	90.8%
— Naloxone available (2022)	No

## EXPENDITURES

	Financing sources					Total
	Domestic private	Domestic public	International: PEPFAR	International: Global Fund	International: all others	
Last available report: 2021	US\$ 133 764	US\$ 2 949 532	US\$ 0	US\$ 0	US\$ 56 966	US\$ 3 140 262

## COUNTRY DATA

## LAWS AND POLICIES

Laws criminalizing the transmission of, non-disclosure of or exposure to HIV transmission	No
Criminalization of sex work among consenting adults	Any criminalization or punitive regulation of sex work
Criminalization of same-sex sexual acts in private	No, laws penalizing consensual same-sex sexual acts have been decriminalized or have never existed anywhere in the country
Criminalization of possession of small amounts of drugs	Yes
Criminalization of transgender people	No
Laws or policies restricting the entry, stay and residence of people living with HIV	No restrictions
Parental consent for adolescents to access HIV testing	Yes
Spousal consent for married women to access sexual and reproductive health services	No
Mandatory HIV testing for marriage, work or residence permits or for certain groups	Yes

## STIGMA AND DISCRIMINATION

Percentage of women and men aged 15–49 years who report discriminatory attitudes towards people living with HIV	...	...
Percentage of people living with HIV who report experienced stigma and discrimination in the general community in the last 12 months	...	...
Percentage of people living with HIV who report experiences of HIV-related discrimination in health-care settings	...	...

## GENDER INEQUALITY AND VIOLENCE

Proportion of ever-married or partnered women aged 15–49 years who experienced physical or sexual violence from a male intimate partner in the past 12 months	...
Percentage of women and men aged 15 to 49 years who agree that a husband is justified in hitting or beating his wife for specific reasons	...

## SOUTH AFRICA

## COUNTRY DATA

## EPIDEMIC ESTIMATES

	2010	2015	2021
<b>New HIV infections</b>			
New HIV infections (all ages)	430 000 [390 000–470 000]	330 000 [300 000–360 000]	210 000 [190 000–230 000]
New HIV infections (0–14)	39 000 [30 000–54 000]	17 000 [13 000–26 000]	10 000 [7 900–21 000]
New HIV infections (15–24)	170 000 [100 000–210 000]	120 000 [70 000–160 000]	67 000 [39 000–84 000]
New HIV infections (women, 15+)	230 000 [210 000–260 000]	190 000 [170 000–210 000]	130 000 [120 000–150 000]
New HIV infections (men, 15+)	150 000 [130 000–180 000]	120 000 [110 000–140 000]	70 000 [61 000–84 000]
HIV incidence (all ages) per 1000 population	9.52 [8.58–10.57]	6.91 [6.19–7.73]	4.19 [3.74–4.67]
<b>AIDS-related deaths</b>			
AIDS-related deaths (all ages)	190 000 [140 000–230 000]	86 000 [70 000–110 000]	51 000 [44 000–63 000]
AIDS-related deaths (0–14)	18 000 [12 000–24 000]	4800 [2800–7600]	2800 [1900–5200]
AIDS-related deaths (women, 15+)	80 000 [60 000–100 000]	42 000 [33 000–52 000]	26 000 [21 000–31 000]
AIDS-related deaths (men, 15+)	90 000 [69 000–120 000]	40 000 [31 000–57 000]	23 000 [18 000–30 000]
<b>People living with HIV</b>			
People living with HIV (all ages)	5 300 000 [4 900 000–5 700 000]	6 500 000 [6 000 000–7 100 000]	7 500 000 [7 000 000–8 200 000]
People living with HIV (0–14)	280 000 [230 000–340 000]	320 000 [250 000–400 000]	270 000 [210 000–370 000]
People living with HIV (women, 15+)	3 300 000 [3 100 000–3 600 000]	4 100 000 [3 800 000–4 500 000]	4 800 000 [4 500 000–5 200 000]
People living with HIV (men, 15+)	1 700 000 [1 500 000–1 900 000]	2 100 000 [1 900 000–2 300 000]	2 400 000 [2 200 000–2 700 000]
HIV prevalence (15–49)	16.3 [14.5–18.0]	18.2 [15.8–20.2]	18.3 [15.6–20.5]

## LAWS AND POLICIES

Laws criminalizing the transmission of, non-disclosure of or exposure to HIV transmission	No, but prosecutions exist based on general criminal laws
Criminalization of sex work among consenting adults	Any criminalization or punitive regulation of sex work
Criminalization of same-sex sexual acts in private	No, laws penalizing consensual same-sex sexual acts have been decriminalized or have never existed anywhere in the country
Criminalization of possession of small amounts of drugs	Yes
Criminalization of transgender people	No
Laws or policies restricting the entry, stay and residence of people living with HIV	No restrictions
Parental consent for adolescents to access HIV testing	Yes
Spousal consent for married women to access sexual and reproductive health services	No
Mandatory HIV testing for marriage, work or residence permits or for certain groups	No

## STIGMA AND DISCRIMINATION

Percentage of women aged 15–49 years who report discriminatory attitudes towards people living with HIV ... 2017

... 16.9

Percentage of people living with HIV who report experienced stigma and discrimination in the general community in the last 12 months ...

Percentage of people living with HIV who report experiences of HIV-related discrimination in health-care settings ...

## GENDER INEQUALITY AND VIOLENCE

Proportion of ever-married or partnered women aged 15–49 years who experienced physical or sexual violence from a male intimate partner in the past 12 months 2017 30.3

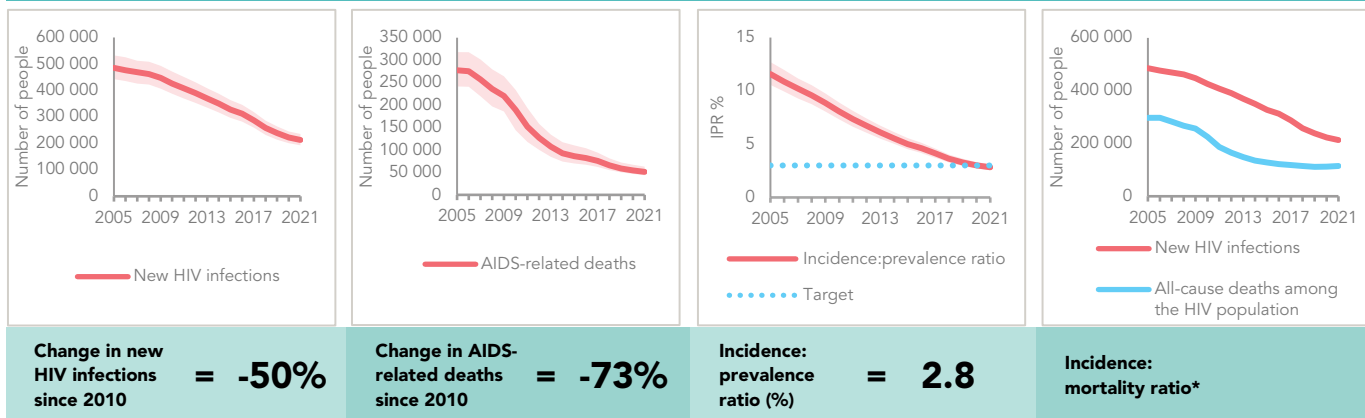
Percentage of women and men aged 15 to 49 years who agree that a husband is justified in hitting or beating his wife for specific reasons ...

## EXPENDITURES

	Financing sources					Total
	Domestic private	Domestic public	International: PEPFAR	International: Global Fund	International: all others	
Last available report: 2020	US\$ 75 173 803	US\$ 1 763 084 852	US\$ 618 315 364	US\$ 44 072 842	US\$ 42 637 266	US\$ 2 543 284 126



### EPIDEMIC TRANSITION METRICS



\* The incidence:mortality ratio is not published if the country has not achieved antiretroviral therapy coverage of 91% or higher (the testing and treatment target for 2025).

### KEY POPULATIONS

	Sex workers	Men who have sex with men	People who inject drugs	Transgender people	Prisoners
Estimated size of population	146 000	309 700	...	179 300	166 400
HIV prevalence	62.3%	29.7%	21.8%	58%	3.5%
HIV testing and status awareness	81.0%	66.0%	79.8%	...	...
Antiretroviral therapy coverage	69.5%	44.1%	40.5%	...	99.3%
Condom use	...	71.8%	57.1%	76.6%	...
Coverage of HIV prevention programmes	...	...	...	...	...
Avoidance of health care because of stigma and discrimination	...	...	...	...	...
Expenditures in US\$ (2020)	7 616 052	1 744 100	2 000 611	311 606	2 280 355

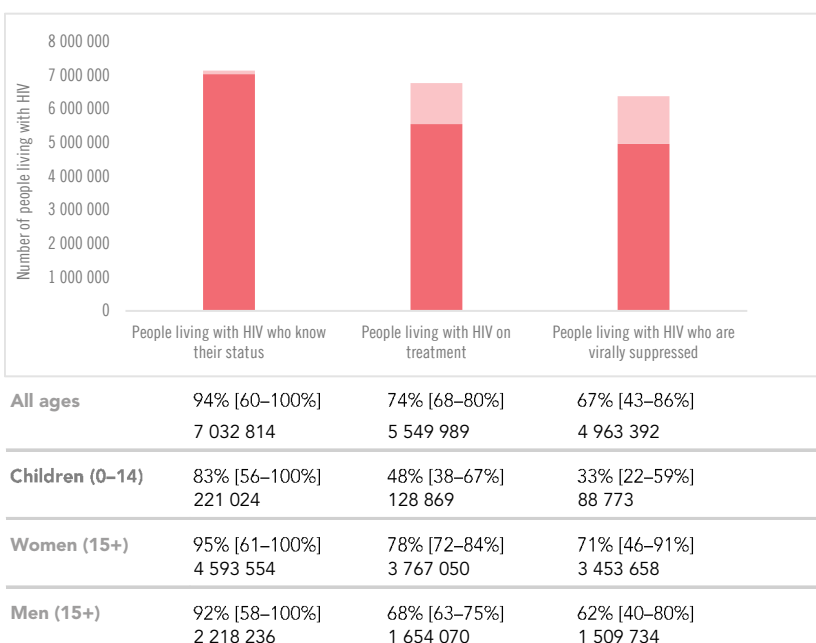
### HIV COMORBIDITIES

Estimated number of incident tuberculosis cases among people living with HIV (2020)	234 000 [164 000 -316 000]
People living with HIV who started TB preventive therapy (2020)	356 872
Cervical cancer screening of women living with HIV	...
People coinfectd with HIV and hepatitis C virus starting hepatitis C treatment	...

### HIV PREVENTION

Adults aged 15+ years with unsuppressed viral load	5.4%
Knowledge of HIV prevention among young people aged 15-24 years	...
— Women	...
— Men	...
Condom use at last sex with a non-marital, non-cohabiting partner among people aged 15-49 years	...
— Women	...
— Men	...
Women aged 15-49 years who have their demand for family planning satisfied by modern methods	...

### HIV TESTING AND TREATMENT CASCADE



### ELIMINATION OF VERTICAL TRANSMISSION

	2015	2021
Percentage of pregnant women living with HIV accessing antiretroviral medicines	94% [67-100%]	96% [68-100%]
Final vertical transmission rate including during breastfeeding	5.1% [4.8-6.4%]	3.5% [3.0-5.6%]
Early infant diagnosis	92.1% [75.8- >95%]	93.5% [76.5- >95%]

Men aged 15-49 years who are circumcised	...
Voluntary medical male circumcisions performed according to national standards (2021)	372 588
People who received PrEP at least once during the reporting period (2021)	346 667
Harm reduction	...
— Use of sterile injecting equipment at last injection	...
— Needles and syringes distributed per person who injects (2020)	36
— Coverage of agonist opioid methadone therapy (2020)	0.7%
— Naloxone available (2022)	No

## SOUTH SUDAN

## COUNTRY DATA

## EPIDEMIC ESTIMATES

	2010	2015	2021
<b>New HIV infections</b>			
New HIV infections (all ages)	14 000 [13 000–16 000]	15 000 [14 000–17 000]	17 000 [16 000–20 000]
New HIV infections (0–14)	3000 [2600–3300]	2400 [2100–2800]	2900 [2500–3300]
New HIV infections (15–24)	3700 [2300–4600]	4100 [2600–5100]	4700 [3000–5900]
New HIV infections (women, 15+)	6400 [5800–7500]	7500 [6800–8800]	9100 [8100–11 000]
New HIV infections (men, 15+)	4700 [4200–6100]	4700 [4200–6100]	5000 [4300–6600]
HIV incidence (all ages) per 1000 population	1.28 [1.21–1.48]	1.17 [1.10–1.38]	1.27 [1.18–1.47]
<b>AIDS-related deaths</b>			
AIDS-related deaths (all ages)	9900 [9400–12 000]	9400 [8800–11 000]	8000 [7200–9700]
AIDS-related deaths (0–14)	2200 [1900–2400]	1900 [1700–2100]	1800 [1600–2000]
AIDS-related deaths (women, 15+)	4500 [4100–5200]	4100 [3700–4800]	3500 [2900–4400]
AIDS-related deaths (men, 15+)	3300 [3000–4300]	3400 [3100–4500]	2700 [2300–3600]
<b>People living with HIV</b>			
People living with HIV (all ages)	130 000 [130 000–150 000]	150 000 [140 000–160 000]	170 000 [170 000–190 000]
People living with HIV (0–14)	16 000 [15 000–18 000]	16 000 [14 000–17 000]	15 000 [13 000–16 000]
People living with HIV (women, 15+)	67 000 [64 000–72 000]	78 000 [75 000–84 000]	99 000 [95 000–110 000]
People living with HIV (men, 15+)	48 000 [45 000–55 000]	53 000 [50 000–60 000]	60 000 [56 000–68 000]
HIV prevalence (15–49)	2.0 [2.0–2.0]	1.9 [1.9–1.9]	2.1 [2.1–2.1]

## LAWS AND POLICIES

Laws criminalizing the transmission of, non-disclosure of or exposure to HIV transmission	Yes
Criminalization of sex work among consenting adults	Any criminalization or punitive regulation of sex work
Criminalization of same-sex sexual acts in private	Yes, imprisonment (up to 14 years)
Criminalization of possession of small amounts of drugs	Yes
Criminalization of transgender people	...
Laws or policies restricting the entry, stay and residence of people living with HIV	No restrictions
Parental consent for adolescents to access HIV testing	Yes
Spousal consent for married women to access sexual and reproductive health services	No
Mandatory HIV testing for marriage, work or residence permits or for certain groups	No

## STIGMA AND DISCRIMINATION

Percentage of women and men aged 15–49 years who report discriminatory attitudes towards people living with HIV	...
Percentage of people living with HIV who report experienced stigma and discrimination in the general community in the last 12 months	2020 8.4
Percentage of people living with HIV who report experiences of HIV-related discrimination in health-care settings	2020 5.8

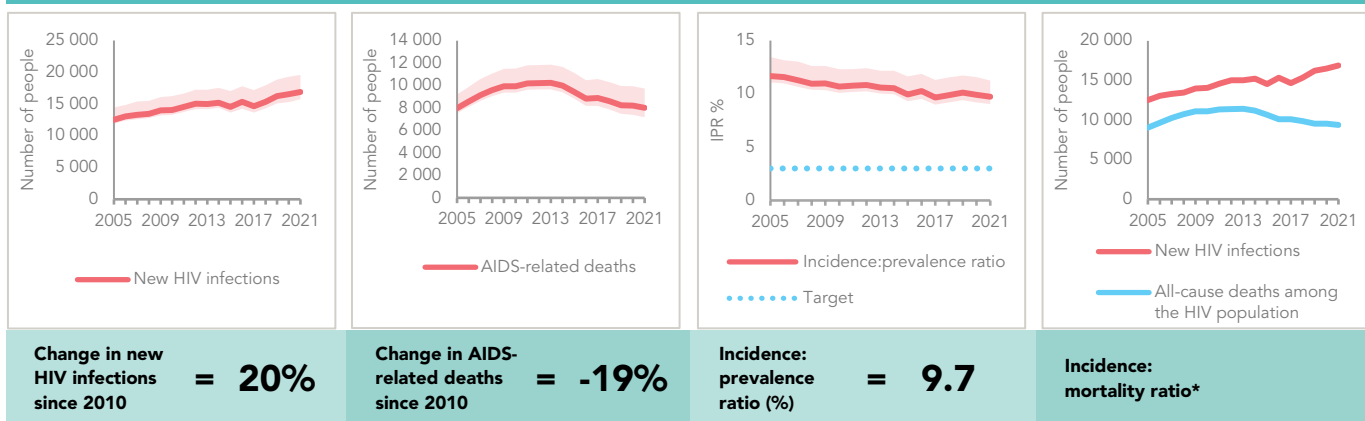
## GENDER INEQUALITY AND VIOLENCE

Proportion of ever-married or partnered women aged 15–49 years who experienced physical or sexual violence from a male intimate partner in the past 12 months	...
Percentage of women and men aged 15 to 49 years who agree that a husband is justified in hitting or beating his wife for specific reasons	...

## EXPENDITURES

	Financing sources					Total
	Domestic private	Domestic public	International: PEPFAR	International: Global Fund	International: all others	
Last available report: 2015	US\$ 0	US\$ 9 521 814	US\$ 0	US\$ 0	US\$ 15 522 478	US\$ 25 044 292

### EPIDEMIC TRANSITION METRICS



\* The incidence:mortality ratio is not published if the country has not achieved antiretroviral therapy coverage of 91% or higher (the testing and treatment target for 2025).

### KEY POPULATIONS

	Sex workers	Men who have sex with men	People who inject drugs	Transgender people	Prisoners
Estimated size of population	...	...	...	...	161 100
HIV prevalence	16%	...	...	...	...
HIV testing and status awareness	76.3%	...	...	...	...
Antiretroviral therapy coverage	75.3%	...	...	...	...
Condom use	43.7%	...	...	...	...
Coverage of HIV prevention programmes	16.3%	...	...	...	...
Avoidance of health care because of stigma and discrimination	12.1%	...	...	...	...
Expenditures in US\$ (2017)	1 270 964	566 542	77 383	...	11 851

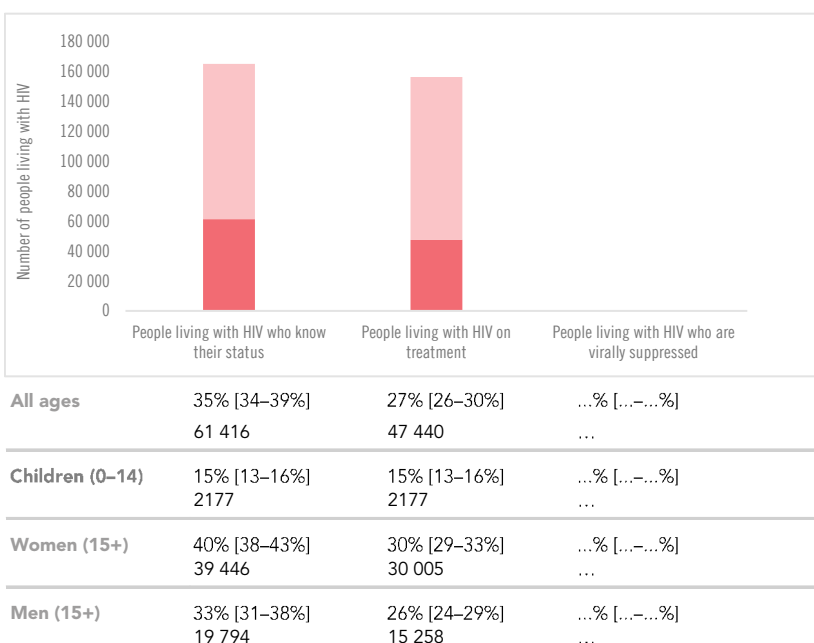
### HIV COMORBIDITIES

Estimated number of incident tuberculosis cases among people living with HIV (2020)	3000 [1900-4300]
People living with HIV who started TB preventive therapy (2020)	3245
Cervical cancer screening of women living with HIV	...
People coinfectd with HIV and hepatitis C virus starting hepatitis C treatment	...

### HIV PREVENTION

Adults aged 15+ years with unsuppressed viral load	...
Knowledge of HIV prevention among young people aged 15-24 years	...
— Women	...
— Men	...
Condom use at last sex with a non-marital, non-cohabiting partner among people aged 15-49 years	...
— Women	...
— Men	...
Women aged 15-49 years who have their demand for family planning satisfied by modern methods	...

### HIV TESTING AND TREATMENT CASCADE



### ELIMINATION OF VERTICAL TRANSMISSION

	2015	2021
Percentage of pregnant women living with HIV accessing antiretroviral medicines	49% [41-56%]	44% [37-49%]
Final vertical transmission rate including during breastfeeding	29.7% [28.1-31.5%]	29.6% [27.8-31.3%]
Early infant diagnosis	1.4% [1.2-1.6%]	15.2% [13.6-17.9%]

Men aged 15-49 years who are circumcised	...
Voluntary medical male circumcisions performed according to national standards (2021)	6447
People who received PrEP at least once during the reporting period	...
Harm reduction	...
— Use of sterile injecting equipment at last injection	...
— Needles and syringes distributed per person who injects	...
— Coverage of agonist opioid methadone therapy	...
— Naloxone available (2022)	No

## UGANDA

## COUNTRY DATA

## EPIDEMIC ESTIMATES

	2010	2015	2021
<b>New HIV infections</b>			
New HIV infections (all ages)	88 000 [80 000–100 000]	69 000 [62 000–84 000]	54 000 [43 000–69 000]
New HIV infections (0–14)	20 000 [17 000–24 000]	11 000 [9900–12 000]	6000 [5200–7800]
New HIV infections (15–24)	27 000 [18 000–33 000]	24 000 [17 000–29 000]	20 000 [14 000–24 000]
New HIV infections (women, 15+)	40 000 [35 000–48 000]	36 000 [32 000–46 000]	31 000 [25 000–40 000]
New HIV infections (men, 15+)	28 000 [24 000–35 000]	22 000 [19 000–29 000]	16 000 [13 000–23 000]
HIV incidence (all ages) per 1000 population	3.12 [2.83–3.59]	2.08 [1.87–2.55]	1.30 [1.05–1.69]
<b>AIDS-related deaths</b>			
AIDS-related deaths (all ages)	51 000 [45 000–60 000]	30 000 [25 000–37 000]	17 000 [15 000–24 000]
AIDS-related deaths (0–14)	15 000 [13 000–17 000]	8300 [7200–9200]	4000 [3300–5000]
AIDS-related deaths (women, 15+)	22 000 [19 000–26 000]	9700 [8100–13 000]	6300 [5300–9300]
AIDS-related deaths (men, 15+)	14 000 [11 000–18 000]	12 000 [9200–16 000]	7100 [5600–10 000]
<b>People living with HIV</b>			
People living with HIV (all ages)	1 100 000 [1 000 000–1 200 000]	1 200 000 [1 200 000–1 300 000]	1 400 000 [1 300 000–1 600 000]
People living with HIV (0–14)	150 000 [130 000–160 000]	120 000 [110 000–130 000]	88 000 [81 000–95 000]
People living with HIV (women, 15+)	550 000 [530 000–590 000]	680 000 [640 000–730 000]	840 000 [780 000–930 000]
People living with HIV (men, 15+)	370 000 [350 000–410 000]	430 000 [410 000–480 000]	500 000 [470 000–550 000]
HIV prevalence (15–49)	6.3 [6.1–6.5]	6.0 [5.8–6.1]	5.2 [5.1–5.4]

## LAWS AND POLICIES

Laws criminalizing the transmission of, non-disclosure of or exposure to HIV transmission	Yes
Criminalization of sex work among consenting adults	Any criminalization or punitive regulation of sex work
Criminalization of same-sex sexual acts in private	Yes, penalty not specified
Criminalization of possession of small amounts of drugs	Yes
Criminalization of transgender people	No
Laws or policies restricting the entry, stay and residence of people living with HIV	No restrictions
Parental consent for adolescents to access HIV testing	Yes
Spousal consent for married women to access sexual and reproductive health services	No
Mandatory HIV testing for marriage, work or residence permits or for certain groups	Yes

## STIGMA AND DISCRIMINATION

Percentage of women and men aged 15–49 years who report discriminatory attitudes towards people living with HIV	...
Percentage of people living with HIV who report experienced stigma and discrimination in the general community in the last 12 months	...
Percentage of people living with HIV who report experiences of HIV-related discrimination in health-care settings	2021 27.6

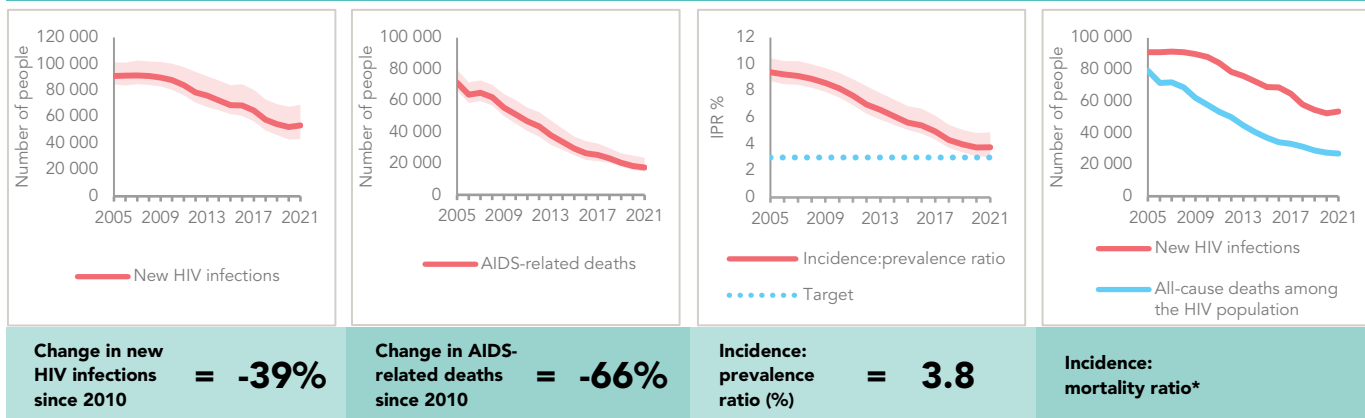
## GENDER INEQUALITY AND VIOLENCE

Proportion of ever-married or partnered women aged 15–49 years who experienced physical or sexual violence from a male intimate partner in the past 12 months	...
Percentage of women and men aged 15 to 49 years who agree that a husband is justified in hitting or beating his wife for specific reasons	...

## EXPENDITURES

	Financing sources					Total
	Domestic private	Domestic public	International: PEPFAR	International: Global Fund	International: all others	
Last available report: 2020	US\$ 0	US\$ 430 654 322	US\$ 0	US\$ 0	US\$ 0	US\$ 462 799 745

### EPIDEMIC TRANSITION METRICS



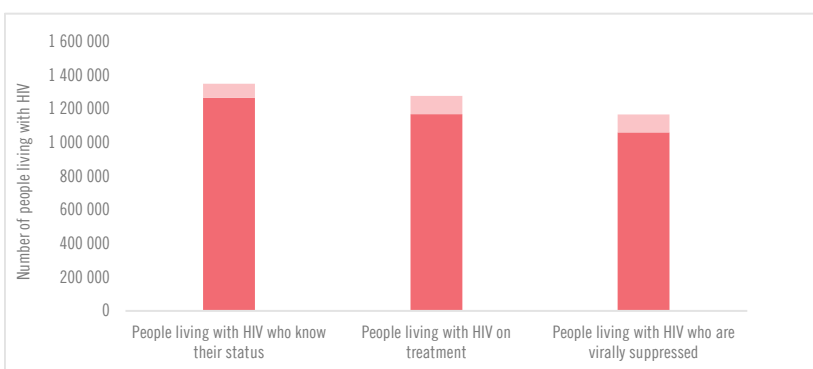
\* The incidence:mortality ratio is not published if the country has not achieved antiretroviral therapy coverage of 91% or higher (the testing and treatment target for 2025).

### KEY POPULATIONS

	Sex workers	Men who have sex with men	People who inject drugs	Transgender people	Prisoners
Estimated size of population	...	...	...	...	...
HIV prevalence	31.3%	12.7%	17%	...	4%
HIV testing and status awareness	88.0%**	54.0%**	45.0%**	100%**	...
Antiretroviral therapy coverage	65%	66%	78%	13%	89.1%
Condom use	...	...	4%	...	...
Coverage of HIV prevention programmes	...	...	8%	...	...
Avoidance of health care because of stigma and discrimination	9.3%	...	64%	...	...
Expenditures in US\$ (2019)	37 017	6507	105 083	24 570	...

\*\* Programme data—not representative; includes people with negative results.

### HIV TESTING AND TREATMENT CASCADE



	89% [85–98%] 1 266 215	82% [78–90%] 1 168 975	78% [74–86%] 1 060 583
<b>All ages</b>			
<b>Children (0–14)</b>	68% [63–74%] 59 855	68% [63–74%] 59 855	61% [56–66%] 53 284
<b>Women (15+)</b>	92% [86–100%] 770 590	87% [81–96%] 725 024	83% [78–93%] 697 358
<b>Men (15+)</b>	88% [83–98%] 435 770	78% [73–87%] 384 096	73% [69–82%] 363 224

### ELIMINATION OF VERTICAL TRANSMISSION

	2015	2021
Percentage of pregnant women living with HIV accessing antiretroviral medicines	100% [100–100%]	100% [83–100%]
Final vertical transmission rate including during breastfeeding	12.1% [11.2–13.4%]	6.8% [5.8–8.1%]
Early infant diagnosis	44.5% [40.4–52.8%]	74.5% [67.5–90.1%]

### HIV COMORBIDITIES

Estimated number of incident tuberculosis cases among people living with HIV (2020)	30 000 [18 000–45 000]
People living with HIV who started TB preventive therapy (2020)	285 844
Cervical cancer screening of women living with HIV	...
People coinfectd with HIV and hepatitis C virus starting hepatitis C treatment	...

### HIV PREVENTION

Adults aged 15+ years with unsuppressed viral load	1.1%
Knowledge of HIV prevention among young people aged 15–24 years	...
— Women	...
— Men	...
Condom use at last sex with a non-marital, non-cohabiting partner among people aged 15–49 years	...
— Women	...
— Men	...
Women aged 15–49 years who have their demand for family planning satisfied by modern methods	...
Men aged 15–49 years who are circumcised	...
Voluntary medical male circumcisions performed according to national standards (2021)	379 710
People who received PrEP at least once during the reporting period (2020)	58 428
Harm reduction	...
— Use of sterile injecting equipment at last injection	...
— Needles and syringes distributed per person who injects	...
— Coverage of agonist opioid methadone therapy	...
— Naloxone available (2022)	No

## UNITED REPUBLIC OF TANZANIA

## COUNTRY DATA

## EPIDEMIC ESTIMATES

	2010	2015	2021
<b>New HIV infections</b>			
New HIV infections (all ages)	100 000 [94 000–120 000]	95 000 [89 000–110 000]	54 000 [51 000–66 000]
New HIV infections (0–14)	17 000 [14 000–20 000]	14 000 [10 000–17 000]	9 400 [5 100–12 000]
New HIV infections (15–24)	29 000 [17 000–36 000]	28 000 [17 000–34 000]	15 000 [10 000–19 000]
New HIV infections (women, 15+)	48 000 [42 000–55 000]	49 000 [44 000–58 000]	28 000 [26 000–35 000]
New HIV infections (men, 15+)	37 000 [32 000–47 000]	32 000 [28 000–41 000]	16 000 [14 000–22 000]
HIV incidence (all ages) per 1000 population	2.48 [2.29–2.94]	2.01 [1.87–2.40]	0.96 [0.91–1.16]
<b>AIDS-related deaths</b>			
AIDS-related deaths (all ages)	73 000 [66 000–86 000]	44 000 [38 000–55 000]	29 000 [26 000–34 000]
AIDS-related deaths (0–14)	15 000 [13 000–17 000]	9 500 [7 300–11 000]	6 100 [3 800–7 900]
AIDS-related deaths (women, 15+)	33 000 [28 000–39 000]	14 000 [11 000–18 000]	11 000 [9 600–13 000]
AIDS-related deaths (men, 15+)	25 000 [22 000–32 000]	21 000 [17 000–27 000]	12 000 [10 000–15 000]
<b>People living with HIV</b>			
People living with HIV (all ages)	1 400 000 [1 400 000–1 500 000]	1 600 000 [1 500 000–1 700 000]	1 700 000 [1 700 000–1 900 000]
People living with HIV (0–14)	160 000 [140 000–170 000]	130 000 [110 000–140 000]	96 000 [77 000–110 000]
People living with HIV (women, 15+)	720 000 [690 000–780 000]	860 000 [830 000–930 000]	1 000 000 [980 000–1 100 000]
People living with HIV (men, 15+)	520 000 [490 000–570 000]	570 000 [540 000–630 000]	610 000 [580 000–660 000]
HIV prevalence (15–49)	5.4 [5.3–5.4]	5.1 [5.0–5.2]	4.5 [4.2–4.6]

## LAWS AND POLICIES

Laws criminalizing the transmission of, non-disclosure of or exposure to HIV transmission	Yes
Criminalization of sex work among consenting adults	Any criminalization or punitive regulation of sex work
Criminalization of same-sex sexual acts in private	Yes, imprisonment (14 years - life)
Criminalization of possession of small amounts of drugs	Yes
Criminalization of transgender people	No
Laws or policies restricting the entry, stay and residence of people living with HIV	No restrictions
Parental consent for adolescents to access HIV testing	Yes
Spousal consent for married women to access sexual and reproductive health services	No
Mandatory HIV testing for marriage, work or residence permits or for certain groups	Yes

## STIGMA AND DISCRIMINATION

Percentage of women aged 15–49 years who report discriminatory attitudes towards people living with HIV ... 2017

... 24.7

Percentage of people living with HIV who report experienced stigma and discrimination in the general community in the last 12 months ...

Percentage of people living with HIV who report experiences of HIV-related discrimination in health-care settings ...

## GENDER INEQUALITY AND VIOLENCE

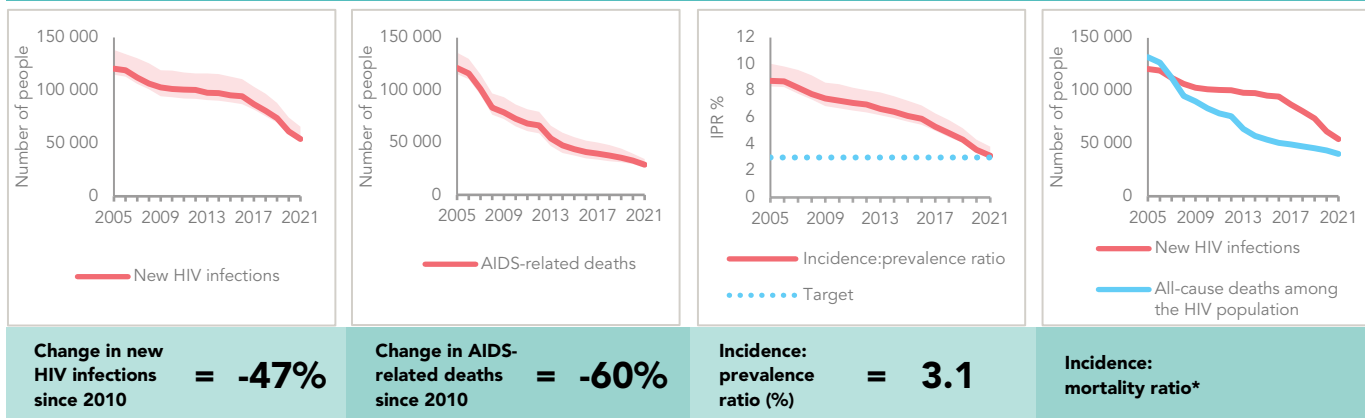
Proportion of ever-married or partnered women aged 15–49 years who experienced physical or sexual violence from a male intimate partner in the past 12 months ...

Percentage of women and men aged 15 to 49 years who agree that a husband is justified in hitting or beating his wife for specific reasons ...

## EXPENDITURES

	Financing sources					Total
	Domestic private	Domestic public	International: PEPFAR	International: Global Fund	International: all others	
Last available report: 2020	US\$ 198 471	US\$ 5 817 741	US\$ 0	US\$ 0	US\$ 0	US\$ 155 852 612

### EPIDEMIC TRANSITION METRICS



\* The incidence:mortality ratio is not published if the country has not achieved antiretroviral therapy coverage of 91% or higher (the testing and treatment target for 2025).

### KEY POPULATIONS

	Sex workers	Men who have sex with men	People who inject drugs	Transgender people	Prisoners
Estimated size of population	...	...	...	...	...
HIV prevalence	15.4%	8.4%	...	...	...
HIV testing and status awareness	98.3%	...	97.6%	...	...
Antiretroviral therapy coverage	...	...	...	...	...
Condom use	72.4%	...	...	...	...
Coverage of HIV prevention programmes	20%	...	...	...	...
Avoidance of health care because of stigma and discrimination	...	...	...	...	...
Expenditures in US\$	...	...	...	...	...

### HIV COMORBIDITIES

Estimated number of incident tuberculosis cases among people living with HIV (2020)	28 000 [13 000 -48 000]
People living with HIV who started TB preventive therapy (2020)	411 083
Cervical cancer screening of women living with HIV	...
People coinfectd with HIV and hepatitis C virus starting hepatitis C treatment	...

### HIV PREVENTION

Adults aged 15+ years with unsuppressed viral load	0.7%
Knowledge of HIV prevention among young people aged 15-24 years	...
— Women	...
— Men	...
Condom use at last sex with a non-marital, non-cohabiting partner among people aged 15-49 years (2017)	...
— Women	30.3%
— Men	46.5%

Women aged 15-49 years who have their demand for family planning satisfied by modern methods ...

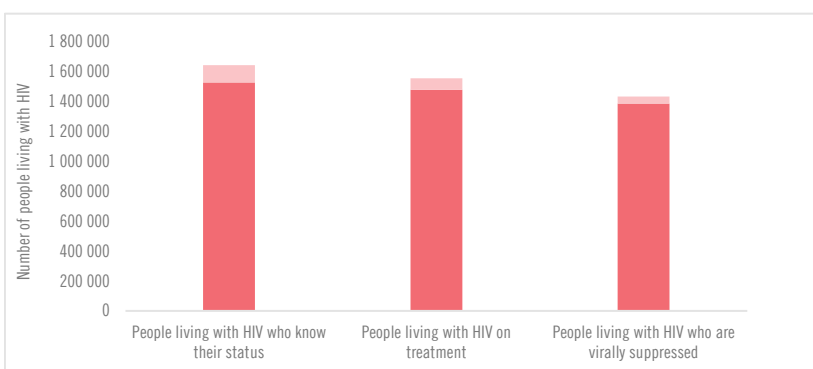
Men aged 15-49 years who are circumcised ...

Voluntary medical male circumcisions performed according to national standards (2021) 571 159

People who received PrEP at least once during the reporting period (2021) 41 335

Harm reduction	
— Use of sterile injecting equipment at last injection	...
— Needles and syringes distributed per person who injects (2017)	15
— Coverage of agonist opioid methadone therapy (2020)	25.6%
— Naloxone available (2022)	Yes

### HIV TESTING AND TREATMENT CASCADE



	2015	2021
Percentage of pregnant women living with HIV accessing antiretroviral medicines	82% [68-91%]	80% [65-89%]
Final vertical transmission rate including during breastfeeding	17.1% [15.0-18.6%]	10.9% [7.4-12.8%]
Early infant diagnosis	43.0% [38.6-51.6%]	47.6% [42.4-58.7%]

### ELIMINATION OF VERTICAL TRANSMISSION

	2015	2021
Percentage of pregnant women living with HIV accessing antiretroviral medicines	82% [68-91%]	80% [65-89%]
Final vertical transmission rate including during breastfeeding	17.1% [15.0-18.6%]	10.9% [7.4-12.8%]
Early infant diagnosis	43.0% [38.6-51.6%]	47.6% [42.4-58.7%]

## ZAMBIA

## COUNTRY DATA

## EPIDEMIC ESTIMATES

	2010	2015	2021
<b>New HIV infections</b>			
New HIV infections (all ages)	72 000 [66 000–82 000]	65 000 [58 000–73 000]	38 000 [32 000–44 000]
New HIV infections (0–14)	12 000 [10 000–14 000]	9 200 [7 400–11 000]	3 800 [3 000–5 200]
New HIV infections (15–24)	25 000 [15 000–31 000]	24 000 [15 000–29 000]	15 000 [8 600–18 000]
New HIV infections (women, 15+)	35 000 [31 000–40 000]	35 000 [30 000–39 000]	22 000 [19 000–25 000]
New HIV infections (men, 15+)	26 000 [22 000–31 000]	22 000 [19 000–26 000]	12 000 [10 000–14 000]
HIV incidence (all ages) per 1000 population	5.74 [5.20–6.61]	4.48 [4.00–5.04]	2.17 [1.86–2.51]
<b>AIDS-related deaths</b>			
AIDS-related deaths (all ages)	32 000 [28 000–39 000]	24 000 [21 000–29 000]	19 000 [17 000–23 000]
AIDS-related deaths (0–14)	8 400 [7 200–9 600]	5 600 [4 500–6 700]	2 400 [1 800–3 300]
AIDS-related deaths (women, 15+)	13 000 [11 000–16 000]	11 000 [9 300–13 000]	9 300 [7 800–11 000]
AIDS-related deaths (men, 15+)	11 000 [8 900–13 000]	7 900 [6 600–9 700]	7 600 [6 400–9 300]
<b>People living with HIV</b>			
People living with HIV (all ages)	1 000 000 [990 000–1 100 000]	1 200 000 [1 100 000–1 300 000]	1 300 000 [1 300 000–1 400 000]
People living with HIV (0–14)	100 000 [92 000–110 000]	88 000 [80 000–97 000]	66 000 [59 000–72 000]
People living with HIV (women, 15+)	560 000 [530 000–590 000]	670 000 [640 000–710 000]	780 000 [740 000–840 000]
People living with HIV (men, 15+)	370 000 [350 000–400 000]	440 000 [410 000–470 000]	480 000 [450 000–520 000]
HIV prevalence (15–49)	13.1 [12.7–13.4]	12.6 [12.3–12.9]	10.8 [10.1–11.1]

## LAWS AND POLICIES

Laws criminalizing the transmission of, non-disclosure of or exposure to HIV transmission	No, but prosecutions exist based on general criminal laws
Criminalization of sex work among consenting adults	Any criminalization or punitive regulation of sex work
Criminalization of same-sex sexual acts in private	Yes, imprisonment (14 years - life)
Criminalization of possession of small amounts of drugs	Yes
Criminalization of transgender people	Yes
Laws or policies restricting the entry, stay and residence of people living with HIV	No restrictions
Parental consent for adolescents to access HIV testing	Yes
Spousal consent for married women to access sexual and reproductive health services	No
Mandatory HIV testing for marriage, work or residence permits or for certain groups	No

## STIGMA AND DISCRIMINATION

Percentage of women aged 15–49 years who report discriminatory attitudes towards people living with HIV	...	2018
Percentage of people living with HIV who report experienced stigma and discrimination in the general community in the last 12 months	...	25.2
Percentage of people living with HIV who report experienced stigma and discrimination in the general community in the last 12 months	...	...

Percentage of people living with HIV who report experiences of HIV-related discrimination in health-care settings	...
-------------------------------------------------------------------------------------------------------------------	-----

## GENDER INEQUALITY AND VIOLENCE

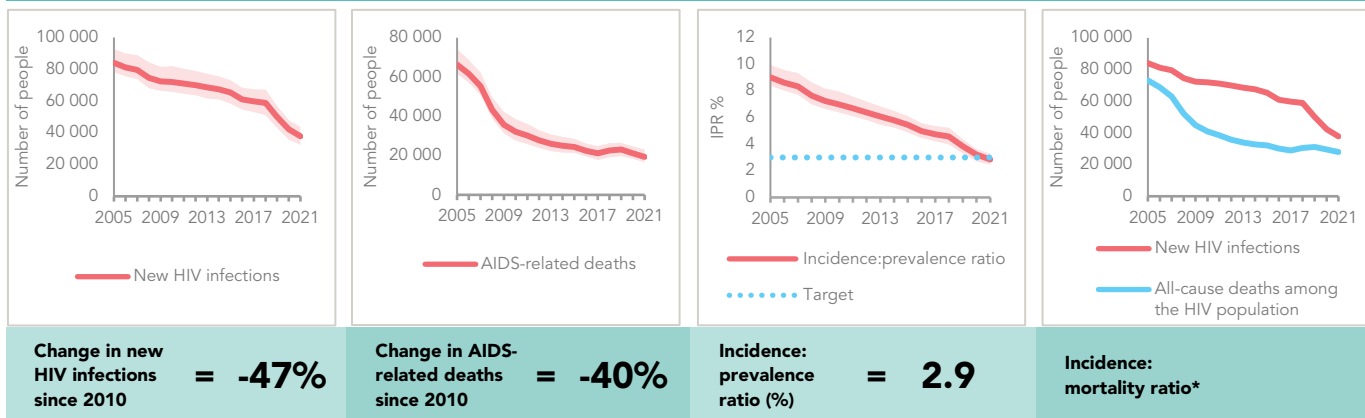
Proportion of ever-married or partnered women aged 15–49 years who experienced physical or sexual violence from a male intimate partner in the past 12 months	2018
Percentage of women and men aged 15 to 49 years who agree that a husband is justified in hitting or beating his wife for specific reasons	25.3
Percentage of women and men aged 15 to 49 years who agree that a husband is justified in hitting or beating his wife for specific reasons	2018
	36.00

## EXPENDITURES

	Financing sources					Total
	Domestic private	Domestic public	International: PEPFAR	International: Global Fund	International: all others	
Last available report: 2020	US\$ 0	US\$ 5 575 275	US\$ 191 383 331	US\$ 52 195 454	US\$ 0	US\$ 249 154 060



### EPIDEMIC TRANSITION METRICS



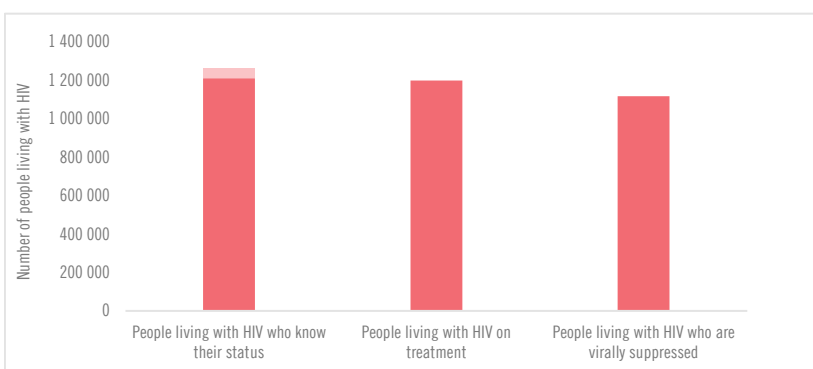
\* The incidence:mortality ratio is not published if the country has not achieved antiretroviral therapy coverage of 91% or higher (the testing and treatment target for 2025).

### KEY POPULATIONS

	Sex workers	Men who have sex with men	People who inject drugs	Transgender people	Prisoners
Estimated size of population	...	...	...	...	22 400
HIV prevalence	48.8%	...	...	...	...
HIV testing and status awareness	56.1%**	75.7%**	48.8%**	61.4%**	...
Antiretroviral therapy coverage	85.9%	...	...	...	100%
Condom use	...	...	...	...	...
Coverage of HIV prevention programmes	...	...	...	...	...
Avoidance of health care because of stigma and discrimination	...	...	...	...	...
Expenditures in US\$	...	...	...	...	...

\*\* Programme data—not representative; includes people with negative results.

### HIV TESTING AND TREATMENT CASCADE



	91% [87–98%] 1 209 189	90% [86–97%] 1 197 703	87% [83–93%] 1 115 447
<b>All ages</b>			
<b>Children (0–14)</b>	67% [60–73%] 43 765	67% [60–73%] 43 765	60% [54–66%] 39 634
<b>Women (15+)</b>	94% [89–100%] 732 151	93% [88–100%] 727 229	90% [86–97%] 704 912
<b>Men (15+)</b>	90% [85–99%] 433 274	89% [83–97%] 426 709	86% [80–93%] 410 535

### ELIMINATION OF VERTICAL TRANSMISSION

	2015	2021
Percentage of pregnant women living with HIV accessing antiretroviral medicines	83% [71–90%]	97% [81–100%]
Final vertical transmission rate including during breastfeeding	16.7% [15.3–18.2%]	7.6% [6.4–9.5%]
Early infant diagnosis	54.1% [49.5–62.5%]	31.9% [29.1–38.2%]

### HIV COMORBIDITIES

Estimated number of incident tuberculosis cases among people living with HIV (2020)	23 000 [15 000–33 000]
People living with HIV who started TB preventive therapy (2020)	300 682
Cervical cancer screening of women living with HIV (2016)	27.3%
People coinfectd with HIV and hepatitis C virus starting hepatitis C treatment	...

### HIV PREVENTION

Adults aged 15+ years with unsuppressed viral load	1.3%
Knowledge of HIV prevention among young people aged 15–24 years (2018)	
— Women	42.6%
— Men	40.6%

Condom use at last sex with a non-marital, non-cohabiting partner among people aged 15–49 years (2018)	
— Women	34.5%
— Men	53.5%

Women aged 15–49 years who have their demand for family planning satisfied by modern methods (2018)	66.2%
Men aged 15–49 years who are circumcised (2018)	31.8%

Voluntary medical male circumcisions performed according to national standards (2021)	488 113
---------------------------------------------------------------------------------------	---------

People who received PrEP at least once during the reporting period (2021)	147 397
---------------------------------------------------------------------------	---------

<b>Harm reduction</b>	
— Use of sterile injecting equipment at last injection	...
— Needles and syringes distributed per person who injects	...
— Coverage of agonist opioid methadone therapy	...
— Naloxone available (2022)	No

## ZIMBABWE

## COUNTRY DATA

## EPIDEMIC ESTIMATES

	2010	2015	2021
<b>New HIV infections</b>			
New HIV infections (all ages)	75 000 [56 000–100 000]	49 000 [37 000–67 000]	23 000 [17 000–31 000]
New HIV infections (0–14)	16 000 [9200–25 000]	7500 [4300–12 000]	4800 [2700–7500]
New HIV infections (15–24)	26 000 [14 000–39 000]	17 000 [9100–25 000]	6800 [3700–10 000]
New HIV infections (women, 15+)	33 000 [24 000–44 000]	25 000 [18 000–34 000]	11 000 [8400–16 000]
New HIV infections (men, 15+)	27 000 [19 000–37 000]	17 000 [12 000–23 000]	6600 [4800–9200]
HIV incidence (all ages) per 1000 population	6.73 [4.99–9.27]	3.86 [2.86–5.31]	1.51 [1.12–2.08]
<b>AIDS-related deaths</b>			
AIDS-related deaths (all ages)	65 000 [53 000–78 000]	30 000 [24 000–36 000]	20 000 [17 000–24 000]
AIDS-related deaths (0–14)	14 000 [8400–20 000]	5700 [3500–8400]	2800 [1700–4200]
AIDS-related deaths (women, 15+)	29 000 [23 000–36 000]	13 000 [10 000–16 000]	9100 [7300–11 000]
AIDS-related deaths (men, 15+)	23 000 [18 000–27 000]	11 000 [9300–14 000]	8200 [6700–9900]
<b>People living with HIV</b>			
People living with HIV (all ages)	1 200 000 [1 100 000–1 400 000]	1 300 000 [1 200 000–1 400 000]	1 300 000 [1 200 000–1 400 000]
People living with HIV (0–14)	140 000 [120 000–170 000]	110 000 [87 000–120 000]	72 000 [59 000–85 000]
People living with HIV (women, 15+)	650 000 [590 000–710 000]	720 000 [660 000–780 000]	750 000 [680 000–810 000]
People living with HIV (men, 15+)	460 000 [420 000–510 000]	490 000 [440 000–530 000]	480 000 [440 000–530 000]
HIV prevalence (15–49)	15.4 [13.5–16.9]	14.2 [12.5–15.6]	11.6 [10.2–12.7]

## LAWS AND POLICIES

Laws criminalizing the transmission of, non-disclosure of or exposure to HIV transmission	No
Criminalization of sex work among consenting adults	Any criminalization or punitive regulation of sex work
Criminalization of same-sex sexual acts in private	Yes, imprisonment (up to 14 years)
Criminalization of possession of small amounts of drugs	Yes
Criminalization of transgender people	No
Laws or policies restricting the entry, stay and residence of people living with HIV	No restrictions
Parental consent for adolescents to access HIV testing	Yes
Spousal consent for married women to access sexual and reproductive health services	No
Mandatory HIV testing for marriage, work or residence permits or for certain groups	No

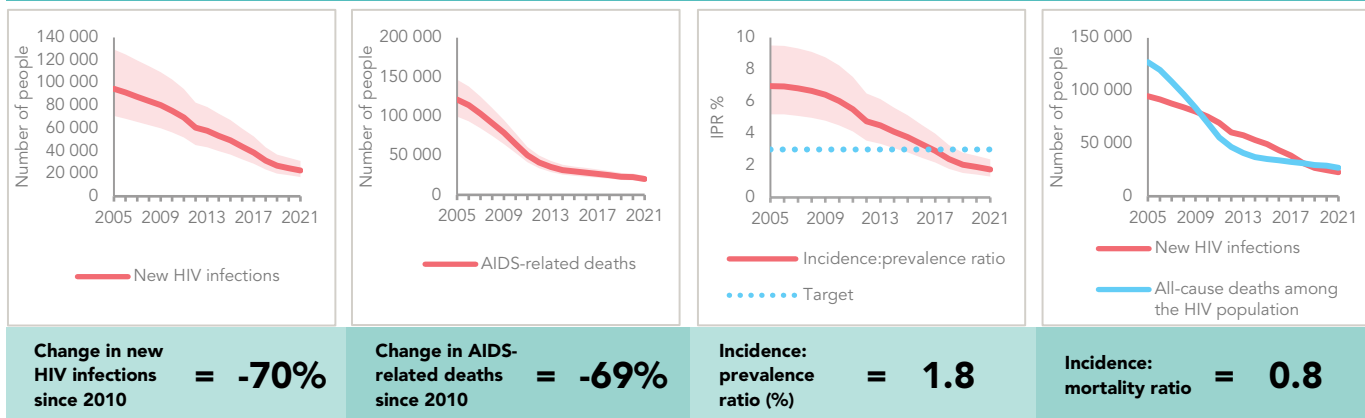
## STIGMA AND DISCRIMINATION

Percentage of women aged 15–49 years who report discriminatory attitudes towards people living with HIV	...	2019
	...	28.7
Percentage of people living with HIV who report experienced stigma and discrimination in the general community in the last 12 months		2021
		33.5
Percentage of people living with HIV who report experiences of HIV-related discrimination in health-care settings		2021
		30.7
<b>GENDER INEQUALITY AND VIOLENCE</b>		
Proportion of ever-married or partnered women aged 15–49 years who experienced physical or sexual violence from a male intimate partner in the past 12 months		2019
		19
Percentage of women and men aged 15 to 49 years who agree that a husband is justified in hitting or beating his wife for specific reasons		...

## EXPENDITURES

	Financing sources					Total
	Domestic private	Domestic public	International: PEPFAR	International: Global Fund	International: all others	
Last available report: 2020	US\$ 0	US\$ 12 932 616	US\$ 97 392 864	US\$ 128 375 813	US\$ 5 967 015	US\$ 244 668 308

### EPIDEMIC TRANSITION METRICS

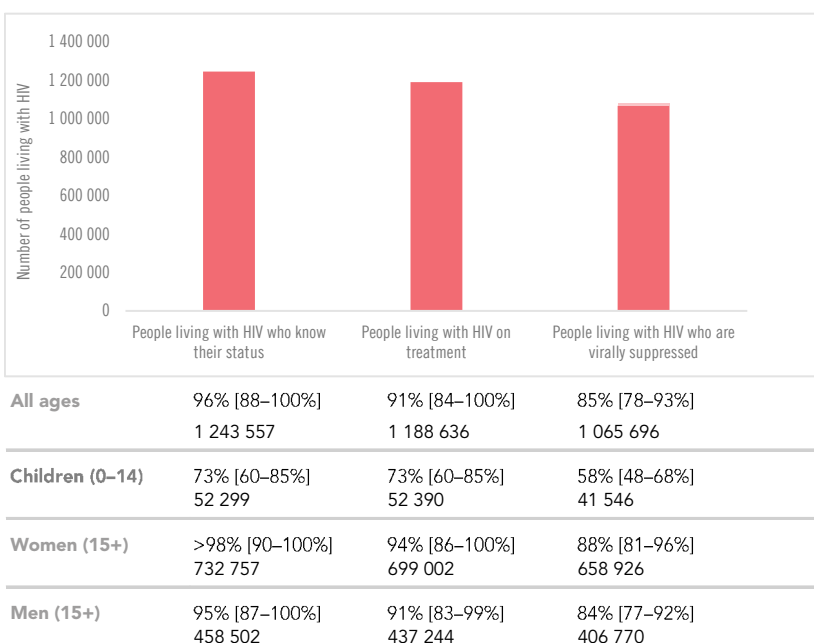


### KEY POPULATIONS

	Sex workers	Men who have sex with men	People who inject drugs	Transgender people	Prisoners
Estimated size of population	...	...	...	...	20 100
HIV prevalence	45.1%	21.1%	...	27.5%	24.1%
HIV testing and status awareness	67.1%**	47.9%**	...	29.8%**	...
Antiretroviral therapy coverage	95.3%	83.4%	...	...	98.2%
Condom use	43.4%	69.2%	...	82%	...
Coverage of HIV prevention programmes	34.5%	25.5%	...	27.9%	...
Avoidance of health care because of stigma and discrimination	39.3%	8.3%	...	...	...
Expenditures in US\$ (2020)	942 880	585 589	...	209 911	148 637

\*\* Programme data—not representative; includes people with negative results.

### HIV TESTING AND TREATMENT CASCADE



### ELIMINATION OF VERTICAL TRANSMISSION

	2015	2021
Percentage of pregnant women living with HIV accessing antiretroviral medicines	85% [64–100%]	87% [66–100%]
Final vertical transmission rate including during breastfeeding	11.2% [7.9–14.8%]	8.9% [6.3–11.8%]
Early infant diagnosis	55.0% [46.7–73.3%]	>95% [85.7– >95%]

### HIV COMORBIDITIES

Estimated number of incident tuberculosis cases among people living with HIV (2020)	16 000 [11 000–20 000]
People living with HIV who started TB preventive therapy (2020)	156 512
Cervical cancer screening of women living with HIV (2015)	26%
People coinfectd with HIV and hepatitis C virus starting hepatitis C treatment	...

### HIV PREVENTION

Adults aged 15+ years with unsuppressed viral load	1.6%
Knowledge of HIV prevention among young people aged 15–24 years	...
— Women	...
— Men	...
Condom use at last sex with a non-marital, non-cohabiting partner among people aged 15–49 years	...
— Women	...
— Men	...
Women aged 15–49 years who have their demand for family planning satisfied by modern methods	...
Men aged 15–49 years who are circumcised	...
Voluntary medical male circumcisions performed according to national standards (2021)	151 037
People who received PrEP at least once during the reporting period (2021)	7061
Harm reduction	...
— Use of sterile injecting equipment at last injection	...
— Needles and syringes distributed per person who injects	...
— Coverage of agonist opioid methadone therapy	...
— Naloxone available (2022)	No

© Joint United Nations Programme on HIV/AIDS (UNAIDS), 2022

Some rights reserved. This work is available under the Creative Commons Attribution-NonCommercial-ShareAlike 3.0 IGO licence (CC BY-NC-SA 3.0 IGO; <https://creativecommons.org/licenses/by-nc-sa/3.0/igo/>).

Under the terms of this licence, you may copy, redistribute and adapt the work for non-commercial purposes, provided the work is appropriately cited, as indicated below. In any use of this work, there should be no suggestion that UNAIDS endorses any specific organization, products or services. The use of the UNAIDS logo is not permitted. If you adapt the work, then you must license your work under the same or equivalent Creative Commons licence. If you create a translation of this work, you should add the following disclaimer along with the suggested citation: "This translation was not created by UNAIDS. UNAIDS is not responsible for the content or accuracy of this translation. The original English edition shall be the binding and authentic edition".

Any mediation relating to disputes arising under the licence shall be conducted in accordance with the mediation rules of the World Intellectual Property Organization (<http://www.wipo.int/amc/en/mediation/rules>).

**Suggested citation.** UNAIDS DATA 2022. Geneva: Joint United Nations Programme on HIV/AIDS; 2022.  
Licence: CC BY-NC-SA 3.0 IGO.

**Third-party materials.** If you wish to reuse material from this work that is attributed to a third party, such as tables, figures or images, it is your responsibility to determine whether permission is needed for that reuse and to obtain permission from the copyright holder. The risk of claims resulting from infringement of any third-party-owned component in the work rests solely with the user.

The designations employed and the presentation of the material in this publication do not imply the expression of any opinion whatsoever on the part of UNAIDS concerning the legal status of any country, territory, city or area or of its authorities, or concerning the delimitation of its frontiers or boundaries. Dotted lines on maps represent approximate border lines for which there may not yet be full agreement.

The mention of specific companies or of certain manufacturers' products does not imply that they are endorsed or recommended by UNAIDS in preference to others of a similar nature that are not mentioned. Errors and omissions excepted, the names of proprietary products are distinguished by initial capital letters.

All reasonable precautions have been taken by UNAIDS to verify the information contained in this publication. However, the published material is being distributed without warranty of any kind, either expressed or implied. The responsibility for the interpretation and use of the material lies with the reader. In no event shall UNAIDS be liable for damages arising from its use.



**UNAIDS**  
**Joint United Nations**  
**Programme on HIV/AIDS**

20 Avenue Appia  
1211 Geneva 27  
Switzerland

+41 22 791 3666

[unaids.org](http://unaids.org)